



**AUTOMOTIVE  
COMPOSITES  
CONFERENCE  
& EXHIBITION**

*World's Leading Automotive Composites Forum*

**SOCIETY OF PLASTICS ENGINEERS  
AUTOMOTIVE & COMPOSITES DIVISIONS**

# COMPOSITES

The Next Generation of Lightweighting



September 9-11

2015

**S SUBURBAN COLLECTION  
SHOWPLACE**

The Diamond Banquet & Conference Center at the Suburban Collection Showplace  
46100 Grand River Ave. Novi, MI 48374 USA





*Faurecia Automotive Exteriors:*  
molding the future.



Faurecia Automotive Exteriors is a proud sponsor of the 2015 ACCE Student Poster Competition.



# Components that take the heat and save weight.

Bakelite® Engineering Thermosets surpass traditional metals and cast aluminum for cost-effective, lightweight engine parts and under-the-hood components. Hexion's proprietary technology delivers outstanding resistance to unforgiving under-the-hood temperatures and harsh automotive fluids, outperforming engineering thermoplastics. Compression or high-speed injection molded parts exhibit exceptional dimensional stability with superior creep and fatigue behavior.

**For more information about  
Bakelite Engineering Thermosets,  
visit us at [hexion.com/  
epoxyphenoliccomposites](http://hexion.com/epoxyphenoliccomposites).**



Aerospace	Automotive
Rail	Wind Energy



Helping you make it in today's world.

# Wednesday, Sept. 9, 2015

7:00–8:15 a.m.

REGISTRATION / BREAKFAST / OPENING OF EXHIBITS - Diamond Ballroom  
JUDGING FOR STUDENT POSTER COMPETITION & PARTS SHOWCASE - Hall C

8:15–8:45

OPENING REMARKS (Including Best Paper Awards & Student Scholarship Announcements)  
Dale Brosius & Fred Deans, 2015 SPE ACCE Co-Chairs - Diamond Ballroom

8:45–9:00

EXHIBITS - Hall C

	IN ONYX	IN OPAL/GARNET	IN EMERALD/AMETHYST
	<b>SESSION 1: ADDITIVE MANUFACTURING &amp; 3D PRINTING - PART 1 OF 2:</b> <i>Additive Manufacturing</i>	<b>SESSION 2: VIRTUAL PROTOTYPING &amp; TESTING - PART 1 OF 5:</b> <i>Impact Testing</i>	<b>SESSION 3: NANOCOMPOSITES - PART 1 OF 3:</b> <i>Cellulose &amp; Nanocellulose</i>
9:00–9:30	<b>James Orrock, Stratasys Inc.</b> Additive Manufacturing Composite Materials for Automotive Product Development	<b>Lolei Khoun, National Research Council Canada (NRCC)</b> Impact Behaviour of Thin Carbon Fibre Reinforced Composites Components for Automotive Applications	<b>Mehdi Tajvidi, University of Maine</b> Transparent Composite Films of All-Cellulose and Cellulose-Polyvinyl Alcohol Nanocomposites: Effect of Relative Humidity and Temperature on Mechanical Performance
9:30–10:00	<b>Ellen Lee, Ford Motor Co.</b> New Materials and Processes for Additive Manufacturing for Automotive Applications	<b>Robert Yancey, Altair Engineering</b> Designing Composite Structures for Impact Performance – What Can We Learn from the Aerospace Industry?	<b>Kim Nelson, American Process Inc.</b> Lightweighting Vehicles with BioPlus™ Nanocellulose Composites
10:00–10:30	<b>Vlastimil Kunc, Oak Ridge National Laboratory</b> Advances and Challenges in Large Scale Polymer Additive Manufacturing	<b>Stuart Brown, Veryst Engineering, LLC</b> Impact Testing of Fiber-Reinforced Thermoplastics	<b>Shokoofeh Ghasemi, University of Maine</b> Cellulose Nanoparticle Reinforced Polyurethane Foams

10:30–11:00

BREAK / EXHIBITS - Hall C

	<b>SESSION 4: ADDITIVE MANUFACTURING &amp; 3D PRINTING - PART 2 OF 2:</b> <i>3D Printing</i>	<b>SESSION 5: VIRTUAL PROTOTYPING &amp; TESTING - PART 2 OF 5:</b> <i>Fabric Weaves</i>	<b>SESSION 6: NANOCOMPOSITES - PART 2 OF 3:</b> <i>Nanostructures &amp; Nanofillers</i>
11:00–11:30	<b>Bryan Crutchfield, Materialise NV</b> 3D Printing: A Game Changer for Manufacturing	<b>Dustin Souza, e-Xstream engineering</b> Prediction of Post Failure Behavior of Woven Made Parts for Crash Design Needs	<b>Nanocomposites Roundtable Discussion</b>
11:30 a.m.–12:00 p.m.	<b>Umesh Gandhi, Toyota Research Institute North America</b> Designing Lattice Structure for 3D Printing	<b>Sarah Stair, Baylor University</b> <b>**2013-2014 ACCE scholarship winner**</b> Investigation of Woven Fiber Reinforced Laminated Composites Using a Through Transmission Ultrasonic Technique	<b>Thomas Köhler, Institut für Textiltechnik (ITA) der RWTH Aachen University</b> Technological and Economical Assessment of Nanoscale Fillers in Fibre Reinforced Thermoplastic Composites
12:00–12:30	<b>Mike Lee, AlphaStar Corp.</b> The Impact of Fiber Content & Effect of Defects on 3D Printing Car Additive Manufacturing Processes	<b>Neal Corey, Ford Motor Co.</b> <b>Ankur Bhosale, BASF Corp.</b> MMLV Lightweight Powertrain – Long Carbon Fiber Structural Front Cover & Oil Pan	<b>Jennifer Zhu, Ford Motor Co.</b> Bio-Based Polyamides Reinforced with Cellulose Nanofibers — Processing & Characterization

12:30–1:30

LUNCH, STUDENT POSTERS, LARGE-PART DISPLAY - Hall C

	<b>SESSION 7: ADVANCES IN THERMOSET COMPOSITES - PART 1 OF 2:</b>	<b>SESSION 8: VIRTUAL PROTOTYPING &amp; TESTING - PART 3 OF 5:</b> <i>Draping &amp; Joining Simulation</i>	<b>SESSION 9: NANOCOMPOSITES PART 3 OF 3:</b> <i>Nanosilica &amp; Nano Trends</i>
1:30–2:00	<b>Michael Sumner, Ashland Inc.</b> Development of Ultra Low Density SMC	<b>Ian Swentek, Fraunhofer Project Centre for Composite Research at the Western University</b> Investigation on Fiber Preforming with Draping Simulation	<b>Kunal Kumar, Evonik Corp.</b> Damage Tolerant Automotive Composites with Nanosilica Modifications
2:00–2:30	<b>Markus Downey, Michigan State University</b> <b>**2014-2015 ACCE scholarship winner**</b> Toughening of Aromatic Epoxy Polymers via Aliphatic Epoxy Monomer Addition: Optimized Fiber-Reinforced Polymer Composites for Lightweighting	<b>Steffen Ropers, Volkswagen Group Research</b> <b>Márton Kardos, The University of Applied Sciences Hof</b> <b>**2015-2016 ACCE scholarship winner**</b> Material Characterization and Draping Simulation of Thermoplastic Prepregs: The Influence of Temperature	<b>James Nelson, 3M</b> Nanosilica-Modified Epoxy Resins for Use in Lightweight Filament-Wound Drive Shaft Applications
2:30–3:00	<b>Thermoset Composites Roundtable Discussion</b>	<b>Yuyang Song, Toyota Research Institute of North America</b> Finite Element Modeling for Adhesive Joint of Dissimilar Materials	<b>Mark Shaw, UltraTech International, Inc.</b> New Nanotechnology Initiatives in the Automotive Market

3:00–3:30

BREAK / EXHIBITS - Hall C

3:30–4:00

KEYNOTE 1 – Diamond Ballroom: **Anthony Schiavo, Research Associate, Lux Research Inc.** **Carbon Fiber 2.0: Roadmap for Growth to 2020 and Beyond**

4:00–5:30

KEYNOTE 2 – Diamond Ballroom: **Institute for Advanced Composites Manufacturing Innovation (IACMI): A Disruptive Moment in Automotive History**  
**Dr. Craig Blue, CEO, IACMI / Dr. Larry Drzal, IACMI Director - Vehicles Technology Area, Michigan State University / Dr. Byron Pipes, IACMI Director - Modeling and Simulation Technology Area, Purdue University / Brian Rice, IACMI Director - Compressed Gas Storage Technology Area, University of Dayton Research Institute / Cliff Eberle, IACMI Director - Materials and Process Technology Area, Oak Ridge National Laboratory**

5:30–5:45

RECEPTION SPONSOR ADDRESS - Diamond Ballroom

5:45–7:45

COCKTAIL RECEPTION / EXHIBITS - Hall C Sponsored by BYK USA Inc.

7:45

CONFERENCE ADJURNS FOR THE DAY



# Thursday, Sept. 10, 2015

7:00-8:00 a.m.

REGISTRATION / BREAKFAST / OPENING OF EXHIBITS & JUDGING FOR PARTS COMPETITION - Exhibit Hall C

	IN ONYX	IN OPAL/GARNET	IN EMERALD/AMETHYST
	<b>SESSION 10: OPPORTUNITIES &amp; CHALLENGES WITH CARBON COMPOSITES - PART 1 OF 2: <i>New Prepreg Technologies</i></b>	<b>SESSION 11: VIRTUAL PROTOTYPING &amp; TESTING - PART 4 OF 5: <i>Fiber Orientation</i></b>	<b>SESSION 12: ADVANCES IN THERMOSET COMPOSITES - PART 2 OF 2:</b>
8:00-8:30	<b>Brian Gardner, Sigmatec Carbon Composite Solutions</b> The Lightweighting Excellence Program: High-Throughput Composites for Automotive Applications	<b>Gregory Lambert, Virginia Polytechnic Institute and State Univ.</b> Assessing the Performance of the Bead-Rod Model for Simulating Long Fiber Orientation in Basic Flows	<b>Mike Gruskiewicz, A. Schulman - Engineered Composites</b> A New Approach to SMC Weight Reduction
8:30-9:00	<b>Michael Karcher, Fraunhofer Institute for Chemical Technology</b> Evaluation of a New "InlinePrepreg" Process Approach to Established Processes for the Manufacturing of Structural Components out of Carbon Fibre Reinforced Plastics	<b>Sebastian Goris, Univ. of Wisconsin-Madison **2014-2015 ACCE scholarship winner**</b> Fiber Orientation Measurements Using a Novel Image Processing Algorithm for Micro-Computed Tomography Scans	<b>Marcel Bruijn, Huntsman Polyurethanes</b> Latest Generation of Polyurethane Resins with Superior Process Control for Fast-Cycle Manufacturing of Structural Composites
9:00-9:30	<b>Max Thouin, Mitsubishi Rayon Carbon Fiber &amp; Composites</b> Automated Solution to High Volume Manufacturing Using Low-Cost PCM TowPrepreg	<b>Dhanendra Kumar Nagwanshi, SABIC</b> Plastic Hybrid Solutions in Truck Body-in-White Reinforcements and in Front Underrun Protection	<b>Sigrid ter Heide, HEXION BV</b> A Life Cycle Assessment-Based Comparison of Engineering Thermoset and Aluminum in an Automotive Under-the-Hood Application

9:30-10:00

BREAK / EXHIBITS - Hall C

	<b>SESSION 13: OPPORTUNITIES &amp; CHALLENGES WITH CARBON COMPOSITES - PART 2 OF 2: <i>Preforming, Woven Composites, &amp; Lightweighting</i></b>	<b>SESSION 14: VIRTUAL PROTOTYPING &amp; TESTING - PART 5 OF 5: <i>Anisotropy Modeling</i></b>	<b>SESSION 15: ADVANCES IN THERMOPLASTIC COMPOSITES - PART 1 OF 1</b>
10:00-10:30	<b>Markus Thiessen, Compositence GmbH</b> Preforming 2.0 – Leap Innovations for Automotive by Compositence	<b>Roger Assaker, e-Xstream engineering</b> Fiber Reinforced Plastic Durability: Nonlinear Multi-Scale Modeling for Structural Part Life Predictions	<b>Yankai Yang, Hanwha Azdel Inc.</b> Development of Lightweight Reinforced Thermoplastic with Improved Stone Impingement Resistance for Automotive Underbody Application
10:30-11:00	<b>Jon Goering, Albany Engineered Composites</b> Application of 3D Woven Composites for Energy Absorption	<b>Doug Kenik, AutoDesk, Inc.</b> Bridging the Gap: As-Manufactured Structural Simulation of Injection Molded Plastics	<b>Eric Wollan, PlastiComp, Inc.</b> Hybrid Long Fiber Thermoplastic Composites: A Perfect Blend of Performance and Cost
11:00-11:30	<b>Brian Gardner, Sigmatec Carbon Composite Solutions</b> Recycled Carbon Thermoplastic for Automotive Lightweighting	<b>Roger Assaker, e-Xstream engineering</b> Anisotropic Damping Behavior of Reinforced Plastic Parts for NVH Simulations	<b>Cécile Demain, Solvay</b> Thermoplastic Composite Structural Part for Truck Market Application
11:30 a.m. -12:00 p.m.	<b>Stephen Greydanus, HEXION Inc.</b> Advancements in Epoxy Technologies for Enabling Automotive Light-Weighting at High Build Rates	<b>Don Robbins, Autodesk, Inc.</b> Progressive Failure Simulation of As-Manufactured Short Fiber Filled Injection Molded Parts: Validation for Complex Geometries and Combined Load Conditions	<b>Jacob Anderson, PPG Fiber Glass Reinforcement Technology Center</b> <b>2015 Dr. Jackie Rehkopf Best Paper Award winner</b> Effect of Processing Technique on the Mechanical Performance of Glass Fiber Reinforced Thermoplastics

12:00-1:00

LUNCH, LARGE-PART DISPLAY HALL C

1:00-1:30

KEYNOTE 3 – Diamond Ballroom: **Deborah Mielewski, Senior Technical Leader of Sustainable Materials and Plastics Research, Ford Motor Co.**  
**Owning the Future: Sustainable Materials Research, Development & Implementation at Ford**

1:30-2:00

KEYNOTE 4 – Diamond Ballroom: **Stefan Stanglmaier, Technologieentwicklung CFK Material- und Prozessabsicherung, BMW Group**  
**Mass Production of CFRP in Automotive Applications – Potential and Challenges in Implementing Local Reinforcements**

	<b>SESSION 16: ENABLING TECHNOLOGIES - PART 1 OF 3: <i>New Manufacturing Strategies</i></b>	<b>SESSION 17: SUSTAINABLE COMPOSITES - PART 1 OF 2: <i>Reinforcements</i></b>	<b>SESSION 18: ADVANCES IN REINFORCEMENT TECHNOLOGIES - PART 1 OF 1</b>
2:00-2:30	<b>Chuck Buckley, Dassault Systèmes</b> Business Intelligence to Help Define Composite Processes Measurements and Production Predictive Analytics	<b>Amy Langhorst, Ford Motor Co.</b> <b>2015 Dr. Jackie Rehkopf Best Paper Award winner</b> Selective Dispersion and Compatibilizing Effect of Cellulose Filler in Recycled PA6 / PP Blends	<b>Hendrik Mainka, Volkswagen AG</b> Raman and X-ray Photoelectron Spectroscopy: Useful Tools for the Chemical Characterization of the Conversion Process of Lignin to Carbon Fiber
2:30-3:00	<b>Burak Uzman, Coriolis Composites SAS</b> Automated Manufacturing for Mass Production and Low-Cost Materials	<b>Niloofer Yousefi Shivyari, University of Maine</b> All-Renewable Paper Nano-Laminates for Automotive Applications	<b>Christopher Pastore, Philadelphia University</b> <b>2015 Dr. Jackie Rehkopf Best Paper Award winner</b> Lightweighting Composites Through Selective Fiber Placement
3:00-3:30	<b>Andrew Rypkema, Pinette Emidecau Industries</b> QSP: A Breakthrough Approach for Automating High Performance Thermoplastic Composites	<b>William Jordan, Baylor University</b> Improving the Properties of Banana Pseudo-Stem Fiber LDPE Composites by Chemically and Thermally Treating the Fibers	<b>David Jack, Baylor University</b> The Impact of Nozzle Shape & Convergence Flow on the Extrudate Fiber Orientation & Subsequent Stiffness in Fused Deposition Modeling

3:30-4:00

BREAK / EXHIBITS - Hall C

4:00-5:30

PANEL DISCUSSION - DIAMOND BALLROOM: **Carbon Steel to Carbon Composites – Can the Existing Automotive Infrastructure be Leveraged to meet Lightweighting Targets?** Moderator: **Jan-Anders Månson, Ecole Polytechnique Fédérale de Lausanne (EPFL)**  
Panelists: **Glade Gunther, Cytec Industries Inc.; Paul Krajewski, General Motors Co.; Peter Ulintz, Precision Metalforming Association; Rainer Kossak, Ph.D., Novelis Inc.; Markus Geier, Schuler Inc.; Hannes Fuchs, Ph.D., Multimatic Engineering**

5:30-5:45

RECEPTION SPONSOR ADDRESS - Diamond Ballroom

5:45-7:30

COCKTAIL RECEPTION / EXHIBITS - Hall C Sponsored by HEXION Inc.

7:30

CONFERENCE ADJURNS FOR THE DAY

# Friday, Sept. 11, 2015

7:00–8:00 a.m.

REGISTRATION / BREAKFAST / OPENING OF EXHIBITS - Hall C

	IN ONYX	IN OPAL/GARNET	IN EMERALD/AMETHYST
	<b>SESSION 19: ENABLING TECHNOLOGIES - PART 2 OF 3: <i>Advances in RTM Technology</i></b>	<b>SESSION 20: SUSTAINABLE COMPOSITES - PART 2 OF 2: <i>Polymers &amp; Trends</i></b>	<b>SESSION 21: TUTORIALS - PART 2 OF 2: <i>Adhesive Bonding of CFRP Composites</i></b>
8:00–8:30	<b>Tobias Jansen, Hennecke GmbH</b> The HP-RTM Technology – Actual Status and New Developments	<b>Sustainable Composites Roundtable Discussion</b>	<b>Louis Dorworth, Abaris Training Resources, Inc.</b> Adhesive Bonding of CFRP Composites: Practices and Principles - Part 1 of 4
8:30–9:00	<b>Philipp Rosenberg, Fraunhofer Institute for Chemical Technology</b> Characterization of Epoxy and Polyurethane Resin Systems for Manufacturing of High-Performance Composites in High-Pressure RTM Process	<b>Henning Karbstein, BASF Corp.</b> Acrodur® Natural Fiber Composites: New Opportunities with Thermoplastic Binder	<b>Louis Dorworth, Abaris Training Resources, Inc.</b> Adhesive Bonding of CFRP Composites: Practices and Principles - Part 2 of 4
9:00–9:30	<b>Ian Swentek, Fraunhofer Project Centre for Composite Research at the Western University</b> Impact of HP-RTM Process Parameters on Mechanical Properties using Epoxy and Polyurethane	<b>Andrea Birch, Ford Motor Co. / University of Waterloo</b> Development of Cost Effective and Sustainable Polyamide Blends for Automotive Applications	<b>Louis Dorworth, Abaris Training Resources, Inc.</b> Adhesive Bonding of CFRP Composites: Practices and Principles - Part 3 of 4
9:30–10:00	<b>Erich Fries, KraussMaffei Technologies GmbH</b> Light Weight Technology — New Approach Thermoplastic RTM / Surface RTM and Fiber Form Technology	<b>Atul Bali, Competitive Green Technologies</b> Light-Weighting Opportunities using Bio-Materials in Automotive Applications	<b>Louis Dorworth, Abaris Training Resources, Inc.</b> Adhesive Bonding of CFRP Composites: Practices and Principles - Part 4 of 4

10:00–10:30

BREAK / EXHIBITS - Hall C

	<b>SESSION 22: ENABLING TECHNOLOGIES - PART 3 OF 3: <i>NDT, Direct Fiber Feeding, &amp; Hybrid Vehicles</i></b>	<b>SESSION 23: BONDING, JOINING &amp; FINISHING - PART 1 OF 1</b>	<b>SESSION 24: TUTORIALS - PART 1 OF 2: <i>Bioplastics &amp; Biocomposites</i></b>
10:30–11:00	<b>Jan Olav Endrerud, DolphiTech AS</b> Non-Expert NDT Solution for Composite Materials in the Automotive Industry	<b>Michael Day, American Chemistry Council - Plastics Division</b> <b>Mahmoodul Haq, Michigan State University</b> Efficient Assembly & Joining: Reversible Bonded Joints Using Nano-Ferromagnetic Particles	<b>Karen Stoeffler, National Research Council Canada (NRCC)</b> Biomaterials for Automotive Applications - Part 1 of 2
11:00–11:30	<b>Martino Lamacchia, Cannon USA</b> An Innovative Solution for the Production of PUR-Based Reinforced Composite Parts for the Latest Hybrid Vehicles	<b>Ryan Schuelke, Enercon Industries</b> Implementing Plasma & Flame Surface Treating Technologies to Improve Adhesion with Composite Materials	<b>Karen Stoeffler, National Research Council Canada (NRCC)</b> Biomaterials for Automotive Applications - Part 2 of 2
11:30 a.m.–12:00 p.m.	<b>Ingo Valentin, Valentin Technologies, LLC</b> Cost Efficient Composite Platform with Integrated Energy Storage for a Hydraulic Hybrid	<b>Andy Stecher, Plasmatreat USA, Inc.</b> Surface Treatments for Better Performance and Automation in Composite Bonding and Manufacturing	

12:00–1:00

LUNCH, PARTS COMPETITION WINNERS, LARGE-PART DISPLAY - Hall C

1:00–2:00

KEYNOTE 5 – Diamond Ballroom: **Antony Dodworth, Chief Technical & Manufacturing Officer, Bright Lite Structures**  
**Zenos E10: A Platform for Novel Lightweight Automotive Composite Structural Design**

2:00–2:15

CLOSING REMARKS & PART INNOVATION AWARDS: Fred Deans & Dale Brosius, 2015 SPE ACCE Co-Chairs

2:15

CONFERENCE ADJURNS FOR THE YEAR



# Welcome

## to ACCE 2015



On behalf of the Automotive and Composites Divisions of SPE, I'd like to welcome you to our 15<sup>th</sup>-annual Automotive Composites Conference and Exhibition, which we have grown to call ACCE. I would especially like to thank our volunteer organizers, technical presenters, and sponsors for, once again, organizing a world-class event. Our conference/expo has grown to be a significant event that supports our industry's needs for the development of materials, applications, processes, and overall technologies.

We must feel very fortunate to be participants in the dynamic, challenging, and ever-changing transportation industry. It is our task, however, to lead the significant changes demanded by our industry's customers, regulatory bodies, and competitive challenges. These changes, which involve vehicle *lightweighting*, improved vehicle dynamics, aesthetics, and the ever-popular cost containment, are brought about by you, our ACCE participants. These are daunting tasks, but you are up to the challenge.

Please take time not only to listen to our informative speakers and presenters, but also to visit our sponsors' exhibits. Talk to them about what they can do to support your needs and how they can assist your program efforts. You will be well rewarded by these networking opportunities.

To paraphrase a popular movie dialog, your mission, should you decide to accept it, is to come to our ACCE with questions; you are to leave with answers. Good luck.

Best regards,

*Fred Deans*

2015 SPE ACCE Co-Chair  
Chief Marketing Officer,  
Allied Composite Technologies LLC

This year's SPE® ACCE proceedings is cloud based.

To access content, please go to:

[http://speautomotive.com/SPEA\\_CD/SPEA2015/about.htm](http://speautomotive.com/SPEA_CD/SPEA2015/about.htm)

If you absolutely must have a CD, please  
come to the front desk and inquire.

We have a limited number for conference attendees.

# from the 2015 SPE<sup>®</sup> Conference Chairs

Welcome to the SPE Automotive Composites Conference and Exhibition. As the world's leading conference dedicated solely to automotive composites, we continue to attract a global audience, providing solutions to improve vehicle performance to meet future targets for emissions, fuel efficiency, and safety. This year's theme, *"The Next Generation of Lightweighting"* recognizes that this is not a new topic; there are innovations constantly introduced in lighter metallic structures in addition to plastics and composites.

We are moving into the era of "smart lightweighting," where new vehicle designs already employ a combination of metals and high-performance composites in ways that only a few years ago seemed too difficult to achieve. In so doing, engineers are putting materials where they will have the greatest impact on mass reduction with the least cost penalty. This is not just materials substitution, but a holistic approach to vehicle design, requiring new technologies to model and simulate, rapidly fabricate, and effectively assemble.

This is the fifteenth year of the ACCE, and the conference continues to grow in quality, reputation, and most important, its value to the automotive community worldwide. All of this is made possible by the strong contributions from our sponsors, speakers, and numerous SPE volunteers and staff. My co-chair, Fred Deans, was the conference chair in ACCE's inaugural season and again in the fourth; I chaired the sixth, seventh and eighth years. Our industry has seen a lot of change in the intervening period, and we are in very exciting times. When the opportunity came to chair this year's event, we both wanted to lead and I am very glad that we did. We have an outstanding program and a record number of exhibitors, reflecting the enthusiasm around composites.

Thank you for attending, and enjoy the SPE ACCE.

Best regards,

*Dale Brosius*

2015 SPE ACCE Co-Chair  
Chief Commercialization Officer,  
Institute for Advanced Composites Manufacturing Innovation (IACMI)





# We help you make it lighter, safer, faster.

When it comes to developing solutions for mass production of lightweight, high performance automotive composites, Hexion Inc. continues to stay ahead of the pack. Our epoxy systems cure faster, produce stiffer parts at de-molding, and provide maximum processing flexibility. Innovative EPIKOTE™ infusion resins and preform binders, backed by our global technical team, can help you turbo-charge composite production.

Visit us at [hexion.com/epoxyphenoliccomposites](http://hexion.com/epoxyphenoliccomposites).



 **HEXION™**

Helping you make it in today's world.

# Sponsors



Visit us at  
**Booth P-3**  
to learn more

**TOMMORROW'S GENERATION  
OF FIBERGLASS COMPOSITION  
AVAILABLE TODAY**



**Surpassing the performance  
boundaries of traditional  
thermoplastic compounds.**

- Expanded fiberglass portfolio
- Unique chemistries
- Excellent mechanical properties
- And more...

*Expertise you trust. Solutions you demand.®*



The PPG logo, TURFOV logo, CHOPVANTAGE logo, INNOFIBER logo, HYBON logo and Expertise you trust. Solutions you demand. are registered trademarks of PPG Industries Ohio, Inc. © 2015 PPG Industries, Inc. All rights reserved.  
www.ppgfiberglass.com



**REDUCE PROCESS TIME | INCREASE PRODUCTION | INTEGRATE INTO DESIGN**

Henkel offers composite solutions across the value chain, including:

- LOCTITE® MAX composite resin systems
- TEROSON® composite bonding solutions



Visit us at  
**Booth #125**

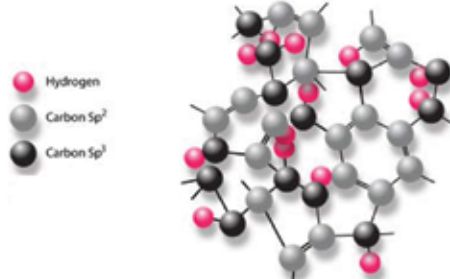
Lighten Up [henkelna.com/lightenup](http://henkelna.com/lightenup)  
[@HenkelAuto\\_NA](https://twitter.com/HenkelAuto_NA)



All marks used are trademarks and/or registered trademarks of Henkel and its affiliates in the U.S. and elsewhere.  
® = registered in the U.S. Patent and Trademark Office. © 2014 Henkel Corporation. All rights reserved. 13122 (08/2014)

**PROTECT PLASTIC PARTS!  
KEEP BEAUTIFUL CONDITION!!  
HIGH BARRIER AGAINST GAS/MOISTURE!!!**

**SCRATCH, WEAR AND TEAR IS DRAMATICALLY  
REDUCED WITH DLC FILM: Diamond Like Carbon.**



- VERY HARD 5,000Hv, VERY THIN 1µm
- SMOOTH SURFACE, LOW FRICTION
- ANTI-CORROSION, HIGH BARRIER, LONG LIFE

Please come to booth# 205 to see our innovative technology.

For further information;  
**(650) 814-8453**  
[mitch@youtec.co.jp](mailto:mitch@youtec.co.jp)





# Contributors 2015



## Chairs

### Conference

**Dale Brosius**, IACMI  
dbrosius@iacmi.org  
+1.586.530.3372

**Fred Deans**, Allied Composite Technologies LLC  
fdeans@alliedcomptech.com  
+1.248.760.7717

### Technical Program

**Michael Connolly**, Huntsman Polyurethanes  
michael\_connolly@huntsman.com  
+1.248.462.0503

### Communications

**Peggy Malnati**, Malnati & Associates  
news@speautomotive.com  
+1.248.592.0765

### Sponsorship

**Teri Chouinard**, Intuit Group  
teri@intuitgroup.com  
+1.810.797.7242

### Registration & Treasurer

**Dawn Stephens**, SPE Automotive Division  
dawn@speautomotive.com  
+1.248.244.8993 ext. 4

### Student Poster Competition

**Uday Vaidya**, University of Tennessee-Knoxville  
uvaidya@utk.edu  
+1.205.410.2898

## Session Organizers

### Additive Manufacturing & 3D Printing

**Umesh Gandhi**, Toyota Technical Center  
umesh.gandhi@tema.toyota.com  
+1.734.995.7174

**Suresh Shah**, SPE  
sbshah356@gmail.com  
+1.248.635.2482

**Leonardo Simon**, University of Waterloo  
lsimon@uwaterloo.ca  
+1.519.888.4567 x 33301

**Steve vanLoozen**, BASF  
steven.vanloozen@basf.com  
+1.734.552.2864

### Advances in Reinforcement Technologies

**Creig Bowland**, Colorado Legacy Group LLC  
cbowland@coloradolegacygroup.com  
+1.704.466.1505

**Ryan Emerson**, PPG Industries  
ryan.emerson@ppg.com  
+1.704.434.2261, ext 2131

**Adam Harms**, Huntsman Advanced Materials  
Adam\_harms@huntsman.com  
+1.314.898.8152

### Advances in Thermoplastic Composites

**Victor Bravo**, National Research Council Canada (NRCC)  
victor.bravo@nrc-cnrc.gc.ca  
+1.905.760.3257

**Robert Egbers**, COMUSA LLC  
regbers@jnc-comusa.com  
+1.248.912.8154

**Klaus Gleich**, Johns Manville  
gleichk@jm.com  
+1.720.934.0758

**Matt Howlett**, Zoltek: A Toray Group Company  
matthew.howlett@zoltek.com  
+1.616.717.3811

**Louis Martin**, Addcomp North America  
lwm@addcompnorthamerica.com  
+1.248.766.4654

**Marianne Morgan**, BASF  
marianne.morgan@basf.com  
+1.734.239.5334

**Jay Raisoni**, SPE  
jraisoni@gmail.com  
+1.248.396.8685

**Vanja Ugresic**, Fraunhofer Project Centre  
vugresi@uwo.ca  
+1.519.661.2111 ex. 86975

### Advances in Thermoset Composites

**Cedric Ball**, Hexion Inc.  
cedric.ball@hexion.com  
+1.614.477.2139

**Leslie Beck**, AOC  
lbeck@aoc-resins.com  
+1.901.854.2318

**Dan Dowdall**, Ashland Inc.  
djdowdall@ashland.com  
+1.248.755.2674

**Enamul Haque**, GE Industrial Products  
Enamul1.haque@ge.com  
+1.860.747.7335

**Dan Heberer**, Huntsman Polyurethanes  
daniel\_p\_heberer@huntsman.com  
+1.248.322.7464

**Rob Seats**, Ashland Inc.  
rlseats@ashland.com  
+1.614.329.7425

### Bonding, Joining & Finishing

**Enamul Haque**, GE Industrial Products  
Enamul1.haque@ge.com  
+1.860.747.7335

### Enabling Technologies

**Ryan Emerson**, PPG Industries  
ryan.emerson@ppg.com  
+1.704.434.2261, ext 2131

**Timo Huber**, Fraunhofer Institute for Chemical Technology  
timo.huber@ict.fraunhofer.de  
+49.721.4640.473

**Mac Larsen**, Graco Inc.  
mlarsen@graco.com  
+1.330.491.4509

**Peter McCormack**, Papp Plastics & Distributing Ltd.  
pmccormack@pappplastics.com  
+1.519.739.3895

**Tobias Potyra**, Zoltek: A Toray Group Company  
tobias.potyra@zoltek.hu  
+49.6102.7999.172

**Nippani Rao**, RAO Associates  
nippanirao@aol.com  
+1.248.553.8323

**Suresh Shah**, SPE  
sbshah356@gmail.com  
+1.248.635.2482

### Nanocomposites

**Dan Buckley**, American GFM  
dbuck@vermontel.net  
+1.802.492.3599

**Andy Rich**, Element 6 Consulting  
andy@element6consulting.com  
+1.781.792.0770

**Leonardo Simon**, University of Waterloo  
lsimon@uwaterloo.ca  
+1.519.888.4567 x 33301

### Opportunities & Challenges with Carbon Composites

**Dale Brosius**, IACMI  
dbrosius@iacmi.org  
+1.586.530.3372

**Antony Dodworth**, Bright Lite Structures  
antony.dodworth@gmail.com  
+44.7754.957697

**Glade Gunther**, Cytec Industries  
glade.gunther@cytec.com  
+1.435.730.4477

**Hendrik Mainka**, Volkswagen AG  
hendrik.mainka@volkswagen.de  
+49.152.229.93521

**Andy Rich**, Element 6 Consulting  
andy@element6consulting.com  
+1.781.792.0770

### Sustainable Composites

**Dan Houston**, Ford Motor Co.  
dhouston2@ford.com  
+1.313.323.2879

**Leonardo Simon**, University of Waterloo  
lsimon@uwaterloo.ca  
+1.519.888.4567 x 33301

**Glen Smith**, Ford Motor Co.  
gsmit305@ford.com  
+1.313.248.2333

**Alper Kiziltas**, Ford Motor Co.  
akizilt1@ford.com  
+1.207.249.5948

### Tutorials

**Alper Kiziltas**, Ford Motor Co.  
akizilt1@ford.com  
+1.207.249.5948

### Virtual Prototyping & Testing

**Roger Assaker**, e-Xstream engineering  
roger.assaker@e-xstream.com  
+1.352.661.52.56.53

**Peter Foss**, General Motors Co.  
Peter.h.foss@gm.com  
+1.586.986.1213

**Umesh Gandhi**, Toyota Technical Center  
umesh.gandhi@tema.toyota.com  
+1.734.995.7174

**David Jack**, Baylor University  
david\_jack@baylor.edu  
+1.254.710.3347

**Rani Richardson**, Dassault Systèmes  
rani.richardson@3ds.com  
+1.201.675.8361

**Antoine Rios**, The Madison Group  
antoine@madisongroup.com  
+1.608.231.1907

**Yu Yang Song**, Toyota Technical Center  
yuyang.song@tema.toyota.com

### Ad Hoc Committee

**Ray Boeman**, Oak Ridge National Laboratory  
boemanrg@ornl.gov  
+1.865.274.1025

**Nick Gianaris**, Thermacore, Inc. & SAMPE  
n.j.gianaris@thermacore.com  
+1.412.382.7150

**Hamid Quraishi**, HASSQ Consulting Company  
hamidquraishi@gmail.com  
+1.507.312.0307

**Conrad Zumhagen**, The Zumhagen Co.  
zumco@msn.com  
+1.734.645.5778

### Carbon Steel to Carbon Composites Panel Discussion

**Jan-Anders Månson**, École Polytechnique Fédérale de Lausanne (EPFL)  
jan-anders.manson@epfl.ch  
+41.21.693.4281

**Glade Gunther**, Cytec Industries Inc.

**Paul Krajewski**, General Motors Co.

**Peter Ulintz**, Precision Metalforming Association

**Rainer Kossak, Ph.D.**, Novolis North America

**Markus Geier**, Schuler Inc.

**Gary R. Maddock**, Zapp Tooling Alloys Inc.

**Hannes Fuchs, Ph.D.**, Multimatic Engineering

# ALWAYS IN MOTION

While you may know SAE International as a provider of standards that serve as the foundation for safety, quality, and effectiveness of automotive products and services, do you know we do the same for **all mobility sectors**?

Since 1905, we have connected **aerospace, automotive, and commercial vehicle** engineers to each other and the technical resources needed to foster a lifetime of learning and the advancement of transportation systems. The sharing of information and collaborative dialogue was the impetus of SAE's earliest standardization efforts and, remains at its core still today.

If you want to know what other other mobility sectors are doing to address their current challenges—many which are similar across vehicle producing industries—get to know SAE.

**Because together, we move the mobility industry forward.**

***alwaysinmotion.sae.org***

...for solutions to engineering ever greener, safer, and connected vehicles. Here's a sampling of what you will find at [alwaysinmotion.sae.org](http://alwaysinmotion.sae.org):

## **Aerospace Technologies for Automotive Efficiencies**

Specialty materials used in the skin of NASA's X-15 rocket plane...water injection technology proven in fighter aircraft seventy years ago...aerospace materials and technologies are helping to create the efficient, yet high performance automobiles people crave.

**Join the discussion. Be part of the answer.**



# Sponsors



Dynamics  
and passion.

FRIMO is your global partner developing and providing turnkey system solutions for manufacturing high quality plastic components.

- PU Processing
- Flexible Trimming
- Punching
- Pressing / Forming
- Thermoforming
- Laminating
- Edgefolding
- Joining / Gluing
- Composites
  - HP RTM
  - Honeycomb / CSM
  - NFPP Back Injection



[www.frimo.com](http://www.frimo.com)

FRIMO INC. | Tel. [810] 668 3140 | [info@frimo.com](mailto:info@frimo.com)

Lightweight.  
Greater Energy Absorption.  
Design Flexibility.  
Energy Efficient.  
**GO FARTHER ON LESS  
WITH PLASTICS.**

**New Roadmap Available**  
Download free at [www.plastics-car.com](http://www.plastics-car.com)

**SIEMENS**

Conquer the complexity of  
composites engineering

Fibersim: Realizing innovative, durable and lightweight products.

Fibersim from Siemens PLM Software is an open solution working with leading CAD/CAE platforms that allows concurrent engineering and the easy exchange of information between analysts, designers, and manufacturing engineers in all facets of composite development. The result? Better performing, lower weight parts – delivered on-time and on-budget. Find out more at [siemens.com/plm/fibersim](http://siemens.com/plm/fibersim).

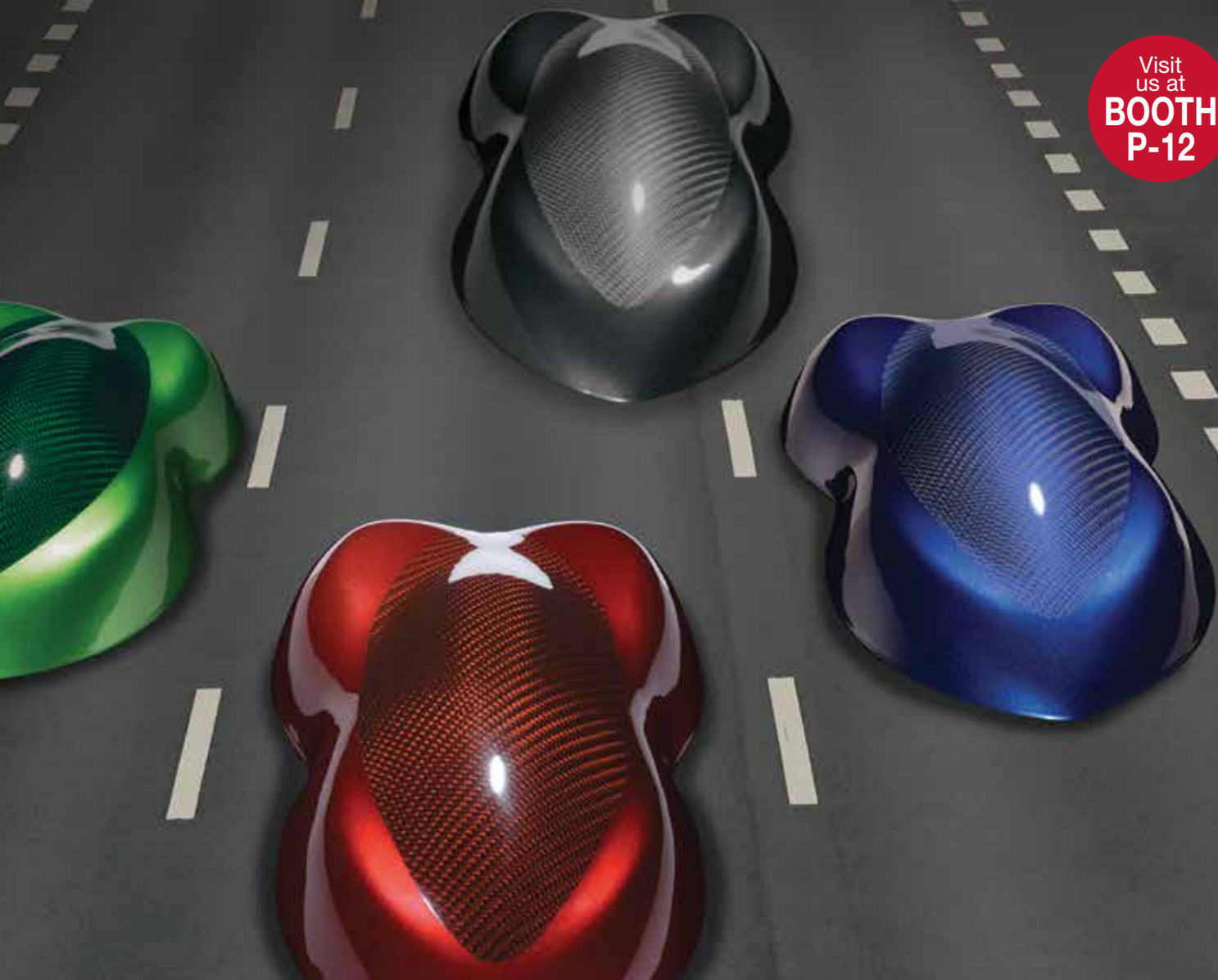
**Realize innovation.**



Plastics Division

**We create chemistry**  
that exposes the brilliance  
of lightweight styling.

Visit  
us at  
**BOOTH  
P-12**



Styling plastics with exposed carbon fiber creates unique visual texture and depth. To prevent discoloration and blistering during exposure, composites based on aromatic epoxies need special UV spectrum protection. Using BASF's Tinuvin® CarboProtect® and high performance pigments in your clear coat will ensure your styling statement is an enduring one.

Visit [basf.us/dpsolutions](http://basf.us/dpsolutions) for additional product information.

**150 years**

 **BASF**

We create chemistry



# Sponsors



World's Leading Automotive Composites Forum  
SOCIETY OF PLASTICS ENGINEERS  
AUTOMOTIVE & COMPOSITES DIVISIONS



Red Spot Paint & Varnish is a global leader in the development and production of high performance coatings and is an industry leader in the design and development of custom formulations, application support and line design.

Our in-house applications labs give our chemists the ability to develop a coating for your specific needs. Our A2LA accredited test lab allows us to accurately test to industry standard specifications.



1107 E. Louisiana Street  
Evansville, IN 47711  
800-457-3544  
www.redspot.com



"Service is my top priority; you can depend on me to get you the right materials — on time."

Tony Seger, Composites One Warehouse Team

Product | People | Process | Performance

There's not just one thing that sets us apart at Composites One, there are thousands - of PRODUCTS that is, including the widest range of raw materials from more than 400 industry-leading suppliers. You'll work with dedicated specialists and technical experts who can handle your complex requirements and provide supply chain solutions meeting your composite and advanced material needs. You'll get products quickly, thanks to our nationwide network of locally based distribution centers. You'll also receive the unparalleled support and value-added services that only a market leader can provide.

*That's the power of one. Composites One.*



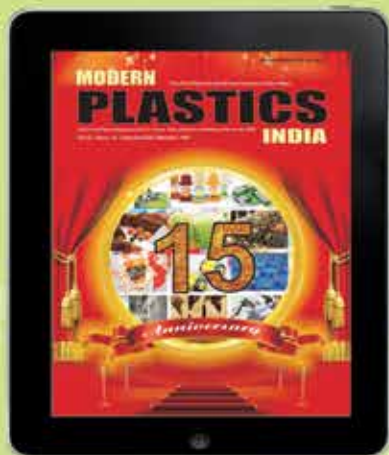
800.621.8003 | www.compositesone.com | www.b2bcomposites.com

Visit us in Booth #Q94 during CAMX 2015 in Dallas, Oct. 26-19.



# 15th Year of Publication Modern Plastics India

Asia's first Plastics Magazine available on Print, Web, iPhones, iPads, Android and Windows Devices for FREE  
Visit: [www.modernplasticsindia.com](http://www.modernplasticsindia.com)



For more details:  
Call: +91-9820481278  
E-mail: [emeraldgroupe@gmail.com](mailto:emeraldgroupe@gmail.com)

## Advertise in Modern Plastics India and see your business grow

### Advantages

- The only monthly Plastics magazine in India in print & digital format
- Maximum exposure of your ad to the right target audience
- The ability to further reach specific groups within the target audience
- Promotions in all national and international Trade Fairs & Exhibitions
- Online readership 2,75,000
- Free for reading / downloading from the digital issue
- Certified circulation as on 31-03-2014 is 38,686 copies

### Additional benefits to advertisers

- One interview with the Managing Director in the print and digital versions of the magazine
- One interview with any other senior officer other than the Managing Director
- Editorial coverage 3-4 times a year for annual advertisers
- Banner on our website with link to advertiser's own site for three months
- Ads will be carried in the digital versions too
- Free complimentary copies to a list of your own customers, 100 maximum x 3 times within India
- One video feed of maximum 03 minutes on [www.plasticstv.com](http://www.plasticstv.com)

## Emerald Plastics Magazines Pvt. Ltd

B-7, Bhanu Park, 1st Floor, J. Adukia Road, Kandivali (West), Mumbai - 400067, India.  
Phone: + 91-22-28081280 / 81 / 28061278 Fax: +91-22-28646665  
Email: [ginu@emeraldgroupe.com](mailto:ginu@emeraldgroupe.com) / [emeraldgroupe@gmail.com](mailto:emeraldgroupe@gmail.com)  
Web: [emeraldgroupe.com](http://emeraldgroupe.com) / [www.emeraldgroupe.in](http://www.emeraldgroupe.in)



# Sponsors

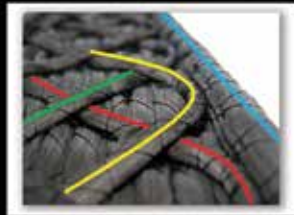
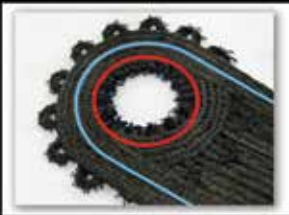
**LAYSTITCH**<sup>TM</sup>  
TECHNOLOGIES

## FIBERPRINTER<sup>TM</sup>

AUTOMATED FIBER PLACEMENT

### Additive Manufacturing

Delivers Stiffer, Stronger and Lighter Weight Composites



Engineering – Manufacturing – Machine Sales

[www.LayStitch.com](http://www.LayStitch.com)

+1 248-346-5146



## FOCUSED ON THE ROAD AHEAD.

In a world of challenges, we're driven to supplying innovative solutions. At Magna, we determine what's needed, and we do what it takes to make it possible. We are devoted to making great things happen, enabling global automotive companies to build products that improve lives. **After all, the future is ours to make.**



DISCOVER  
OUR  
INNOVATIVE  
SOLUTIONS AT

**BOOTH  
P6**

### ADVANTEX<sup>®</sup> ME1510 ROVING

Redefining Performance in New Epoxy SMC  
Structural Applications

### PERFORMAX<sup>®</sup> SE4850 SINGLE-END ROVING

Redefining DLFT PP Performance

[composites.owenscorning.com](http://composites.owenscorning.com)

© 2015 Owens Corning. All Rights Reserved. Picture: gettyimages.com



## suc•cess [sək-'ses]

lightweight strength; corrosion resistance;  
heat resistance; a supplier partner that  
won't "take you for a ride"



Our definition of success is  
helping you achieve yours.

Visit us at booth 229 during the  
SPE Automotive Composites  
Conference & Exhibition



Customized high-performance plastic compounds, resins, composites and masterbatches.

[www.aschulman.com](http://www.aschulman.com)

# BE RELEVANT



Matter to the  
people who matter to  
**your bottom line.**

**AUTOMOTIVE DESIGN**  
*and* **PRODUCTION**

[autofieldguide.com](http://autofieldguide.com)



# DRIVING COMPOSITES FORWARD

In many industries, including automotive, composites are seen as promising solutions to a variety of problems. But designing with composites presents difficult challenges and many complexities that have yet to be completely unraveled.

SABIC is hard at work to help come up with answers. We're developing new thermoplastic solutions, processes and design solutions to help manufacturers across the various industries we serve take full advantage of the unique opportunities offered by composites. Because no matter what obstacles are holding our customers back, we're there ... to help them go forward.

Move ahead to [www.sabic.com](http://www.sabic.com) for more.



# Sponsors



**Thermoplastic Composite Materials**



**Fibrflex® Tow • Fabric • Tow Placement**

1000 Progress Dr, Atlanta Texas 75551  
Email: bob@fibrtec.com

www.fibrtec.com  
Phone: 903-306-0752



Interested in  
**LIGHTWEIGHT and  
PERFORMANCE**

*Glass Fibers  
Performance for your Convenience*



**JM**  
**Johns Manville**

# Lighter LEANER AND FASTER

Reduce vehicle mass with solutions from Dow Automotive Systems that meet real-world requirements. We'll collaborate with you to provide smart solutions for design, weight savings, sustainability and processing. Let us show you how we deliver mass reduction for mass production.



Visit [dowautomotive.com](http://dowautomotive.com) or contact your Dow Automotive representative for more information.



# CW 2015

## CompositesWorld

# CARBON FIBER



IN ASSOCIATION WITH:

**CW**  
CompositesWorld



**GARDNER**  
Business Media, Inc.



## REGISTER TODAY AND SAVE!

**December 8-10, 2015**  
**Knoxville, TN, USA**  
**Knoxville Convention Center**

Join the industry's leading innovators, decision makers and key executives from all aspects of the carbon fiber supply chain in Knoxville, Tennessee for Carbon Fiber 2015!

Carbon Fiber 2015 is the preeminent conference on carbon fiber and the expanding role of this material in the composites industry. The conference offers you cutting-edge information and access to industry experts in streamlining manufacturing costs, market outlooks and forecasting, and more.

### DON'T MISS THE PRE-CONFERENCE SEMINAR!

*2015 Global Markets for Carbon Fiber Composites: Adaptations to High Growth and Market Maturity*

PRESENTED BY: CHRIS RED / Composites Forecasts and Consulting LLC

### CONFERENCE CO-CHAIRS:

**Tia Benson Tolle**, Director of Advanced Materials, Product Development, Boeing Commercial Airplanes

**Andreas Wuellner**, Managing Director of SGL Automotive Carbon Fibers GmbH & Co. KG, A BMW Group and SGL Group Joint Venture

REGISTER BY **OCTOBER 15<sup>th</sup>**  
AND SAVE **\$100** ON YOUR  
CONFERENCE FEES.

[CarbonFiberEvent.com](http://CarbonFiberEvent.com)

**CW 2015**  
CompositesWorld

## CARBON FIBER

EXHIBIT SPACE AND SPONSORSHIPS ARE AVAILABLE

Please contact Kim Hoodin, Marketing Manager  
[khoodin@gardnerweb.com](mailto:khoodin@gardnerweb.com)



# Abstracts of Speaker Presentations 2015

WEDNESDAY, SEPTEMBER 9

— IN ONYX ROOM —

## Additive Manufacturing & 3D Printing - Part 1 of 2: *Additive Manufacturing*

**James Orrock, Stratasys Inc.**

### ***Additive Manufacturing Composite Materials for Automotive Product Development***

Today's 3D printing materials are suitable for prototyping and functional testing of many part types, such as interior trim panels, engine induction systems, and passenger compartment ducting. With the introduction of new high-strength, high-modulus, and high-temperature composite materials for additive manufacturing systems, the application scope can increase significantly to include part types such as exterior body panels, underbody panels, underhood components, and new types of tooling.

**Ellen Lee, Ford Motor Co.**

### ***New Materials and Processes for Additive Manufacturing for Automotive Applications***

As technologies for additive manufacturing continue to evolve, Ford Motor Co. is moving beyond prototyping towards functional, durable materials and applications. Here we discuss a new process under evaluation that can enable production of robust components for automotive use.

### **Vlastimil Kunc, Oak Ridge National Laboratory *Advances and Challenges in Large Scale Polymer Additive Manufacturing***

Additive manufacturing of large polymer structures has recently been demonstrated by printing of several full-size cars. The focus of this presentation is on the key aspects that make this technology feasible as well as challenges standing in the way of its widespread application. The most recent advancements and challenges in printing with fiber-reinforced polymers, temperature profile control, and software integration will be examined.

## Additive Manufacturing & 3D Printing - Part 2 of 2: *3D Printing*

**Bryan Crutchfield, Materialise NV**

### ***3D Printing: A Game Changer for Manufacturing***

3D Printing is not only changing the way parts are manufactured, but also changing the manufacturing processes used to produce them. This presentation will cover how 3D printing and 3D-printed fixtures, part locators, and attribute check features are helping manufacturing companies reduce lead times and tooling costs, and helping to improve quality.

**Umesh Gandhi, Toyota Research Institute North America  
*Designing Lattice Structure for 3D Printing***

In this paper a methodology to design, optimize, and evaluate periodic lattice-based cellular structures, which can be manufactured using 3D printing, is presented. Non-linear finite-element models of the lattice design for simulation are developed and compared with 3D-printed physical parts to verify the approach.

**Mike Lee, AlphaStar Corp.**

### ***The Impact of Fiber Content & Effect of Defects on 3D Printing Car Additive Manufacturing Processes***

Additive manufacturing is distinguished from traditional manufacturing techniques such as casting and machining by its ability to handle complex shapes with great design flexibility and without the typical waste associated with the other processes. Fused deposition modeling (FDM), a leading rapid prototype technique, accomplishes the layer-by-layer build by depositing a material extruded through a nozzle in a raster pattern in each layer. The objective of this work was to determine the impact of fiber content and effect of defects such as void and fiber waviness on quality of a 3D printed car using the additive manufacturing processes.

## Advances in Thermoset Composites – Part 1 of 2:

**Michael Sumner, Ashland Inc.**

### ***Development of Ultra Low Density SMC***

There is a very-high interest in "lightweighting" in the automotive industry due to pending CAFE 2025 regulations to increase fuel economy. Over the past few years, developmental efforts have resulted in 1.2-specific gravity systems with a good balance of both surface quality and mechanical properties. However, there is considerable interest in driving the specific gravity to 1.1, and preferably lower, for further weight reduction and to compete more effectively on a cost basis with aluminum. Product development efforts that have resulted in tough Class A SMC with a density of less than 1.2 will be presented.

**Markus Downey, Michigan State University**

**\*\*2014-2015 ACCE scholarship winner\*\***

### ***Toughening of Aromatic Epoxy Polymers via Aliphatic Epoxy Monomer Addition: Optimized Fiber-Reinforced Polymer Composites for Lightweighting***

Aliphatic epoxy polymers are shown to enhance the Mode I fracture toughness of aromatic-based carbon fiber-reinforced composites. As a 1-wt% concentration copolymer in the matrix, a 35% enhancement in fracture toughness is seen. Used as fiber sizing, aliphatic epoxy shows a 50% increase in fracture toughness, without affecting other composite properties.

## Thermoset Composites Roundtable Discussion



# Abstracts of Speaker Presentations 2015

## — IN OPAL/GARNET ROOM —

### Virtual Prototyping & Testing - Part 1 of 5: *Impact Testing*

**Lolei Khoun, National Research Council Canada (NRCC)**  
***Impact Behaviour of Thin Carbon Fibre Reinforced Composites Components for Automotive Applications***

As carbon fiber-reinforced composite materials are being used more often in automotive components for structural, semi-structural and body panels, it becomes important to understand their behavior under impact loading better, especially for part design and passenger and pedestrian safety. Low-velocity impact tests were performed to investigate the impact behavior of thin carbon fiber-reinforced composite laminates and determine damage mechanisms and damage energy thresholds. Two 2.5-D numerical approaches were developed and correlated to experiments to be used as design tools for carbon fiber reinforced composite components subjected to impact design requirements.

**Robert Yancey, Altair Engineering**  
***Designing Composite Structures for Impact Performance – What Can We Learn from the Aerospace Industry?***

Simulating the response of metallic structures to automotive crash scenarios is well developed and well accepted. As the automotive industry adopts the use of more composites, a similar confidence is required for simulating the crash response of composite materials. A review of simulation modeling methods for impact scenarios in aerospace and automotive applications will be reviewed along with a discussion of what each industry can learn from the other in the impact modeling and simulation of composite structures.

**Stuart Brown, Veryst Engineering, LLC**  
***Impact Testing of Fiber-Reinforced Thermoplastics***

Fiber-reinforced thermoplastics are used in a wide range of automotive applications involving impact loading. We will present results for the tensile and compressive stress-strain response of a fiber-reinforced thermoplastic over a large strain-rate range, varying from 0.001 sec<sup>-1</sup> to 1500 sec<sup>-1</sup>. We discuss the complications of obtaining these data and how one method may be superior to another.

### Virtual Prototyping & Testing - Part 2 of 5: *Fabric Weaves*

**Dustin Souza, e-Xstream engineering**  
***Prediction of Post Failure Behavior of Woven Made Parts for Crash Design Needs***

A complete workflow based on simulation to support the development of woven composites in the automotive industry is described. Three steps are covered: stiffness calibration, progressive damage-behavior calibration, and validation at the coupon level. Once these steps are achieved, application to a real case (a crash box) is performed.

**Sarah Stair, Baylor University**  
***\*\*2013-2014 ACCE scholarship winner\*\****

***Investigation of Woven Fiber Reinforced Laminated Composites Using a Through Transmission Ultrasonic Technique***

Carbon fiber-reinforced laminated composites often produce materials with a high strength to weight ratio, but the manufacturing and repair of these materials is often more complicated than that of metals. While nondestructive evaluation methods, such as ultrasound, are able to identify defects or damage within a part, there is a need for a nondestructive testing method that can identify how the defect or damage affects the resulting strength of the part. The natural complexity of the fiber-reinforced laminate increases the difficulty of determining such information via ultrasound because the fibers and polymer matrix scatter the ultrasound wave as it travels through the thickness of the laminate. The new through-transmission ultrasound technique presented in this study is applied to a laminated composite consisting of woven carbon fiber material. The results provide the ratio of the shear to the longitudinal wave speeds within the laminate, which may be applicable for use with the Christoffel Equation to identify the planar stiffness components. Additional results demonstrate how this technology may also be applied to laminates bonded to another material, such as aluminum.

**Neal Corey, Ford Motor Co. & Ankur Bhosale, BASF Corp.**  
***MMLV Lightweight Powertrain – Long Carbon Fiber Structural Front Cover & Oil Pan***

This presentation outlines the joint collaborations of Ford RIC (Research & Innovation) along with the BASF Performance Materials teams on lightweighting initiatives targeted towards optimizing the mass of the powertrain on the Multi Material Lightweight Vehicle (MMLV) platform. The MMLV developed by Magna International and Ford Motor Co. is the result of a U.S. Department of Energy project DE-EE0005574. The project demonstrates the lightweighting potential of a 5-passenger sedan while maintaining vehicle performance and occupant safety. Prototype vehicles were manufactured and limited full vehicle testing was conducted. The Mach-I vehicle design, comprised of commercially available materials and production processes, achieved a 364 kg (23.5%) full vehicle mass reduction, enabling the application of a 1.0-liter three-cylinder engine resulting in a significant environmental benefit and fuel reduction. Both the composite front cover and oil pan structural components were designed, and developed using a 50% long-carbon fiber (LCF) product. The final components, helped achieve a substantial weight savings vs. aluminum counterparts while meeting the functional requirements based off the production Ford 1.0L I3 EcoBoost engine.



# Abstracts of Speaker Presentations 2015

## Virtual Prototyping & Testing - Part 3 of 5: *Draping & Joining Simulation*

**Ian Swentek**, Fraunhofer Project Centre for Composite Research at the Western University

### ***Investigation on Fiber Preforming with Draping Simulation***

A new software, Aniform is used to conduct preform simulations with the double-dome geometry. The simulation is designed to predict the blank shape and wrinkle formation from phenomenological fabric properties. The work first highlights methods to optimize the simulation. Draping simulations are conducted to mirror experimental tests and the results are discussed.

**Steffen Ropers**, Volkswagen Group Research  
**Márton Kardos**, University of Applied Sciences Hof  
**\*\*2015-2016 ACCE scholarship winner\*\***

### ***Material Characterization and Draping Simulation of Thermoplastic Prepregs: The Influence of Temperature***

The potential of dynamic mechanical analysis (DMA) was investigated as an effective method to characterize the temperature dependency of mechanical properties of thermoplastic prepregs. A sensitivity analysis based on the design of experiments (DoE) approach was conducted to identify parameters with major effects on blank temperature in draping simulations. The resulting major parameters were combined with temperature-dependent mechanical properties as parameters for a subsequent DoE to identify their effect on the shear angle. Here, DMA results were used to calibrate temperature-dependent mechanical properties.

**Yuyang Song**, Toyota Research Institute of North America  
***Finite Element Modeling for Adhesive Joint of Dissimilar Materials***

A finite-element method is introduced to predict the adhesive joining of composite materials. Standard lap shear and peel tests are conducted and the adhesive properties are estimated using reverse engineering. The estimated properties and the finite-element analysis (FEA) modeling approach are validated on a 3D part under complex loading conditions. Such FEA modeling methods will benefit future projects involving the joining of dissimilar materials in vehicle components.

## — IN EMERALD/AMETHYST ROOM —

## Nanocomposites - Part 1 of 3: *Cellulose & Nanocellulose*

**Mehdi Tajvidi**, University of Maine  
***Transparent Composite Films of All-Cellulose and Cellulose-Polyvinyl Alcohol Nanocomposites: Effect of Relative Humidity and Temperature on Mechanical Performance***

The two main forms of cellulose nanomaterials namely, cellulose nanocrystals (CNC) and cellulose nanofibrils (CNF) are known as high strength, high stiffness renewable nanomaterials of the

future. However, most information available on the mechanical performance of these fibers and their composites comes from testing at room temperature and 50% relative humidity. This research presents our findings on mechanical properties of these materials as affected by temperature and relative humidity.

**Kim Nelson**, American Process Inc.  
***Lightweighting Vehicles with BioPlus™ Nanocellulose Composites***

Cellulose nanomaterials, including cellulose nanocrystals (CNC) and cellulose nanofibrils (CNF), are extremely strong, and also biobased, renewable, and nontoxic. Cellulose nanomaterials can provide reinforcement and improved barrier properties in polymer composites, hydrogels, and aerogels with materials such as polypropylene, polyester, nylon, and polylactide for automotive applications. Major challenges are cost and compatibility with hydrophobic polymers. This presentation will describe a new process that meets these challenges.

**Shokoofeh Ghasemi**, University of Maine  
***Cellulose Nanoparticle Reinforced Polyurethane Foams***

We are presenting a new application of cellulose nanocrystals (CNC) and cellulose nanofibrils (CNF) in foam structures made of polyurethane (PUR). Different percentages of CNC and CNF were added to PUR and foam properties were studied using scanning electron microscopy (SEM), image analysis, atomic force microscopy (AFM), dynamic mechanical analysis (DMA), and thermogravimetric analysis (TGA).

## Nanocomposites - Part 2 of 3: *Nanostructures & Nanofillers*

## Nanocomposites Roundtable Discussion

**Thomas Köhler**, Institut für Textiltechnik (ITA) der RWTH Aachen University  
***Technological and Economical Assessment of Nanoscale Fillers in Fibre Reinforced Thermoplastic Composites***

For an optimal consolidation of fibre reinforced thermoplastic composites, the temperature distribution needs to be homogenous throughout the material. In the course of the BMBF-project "VIP Organo" the shortening effect of nanoscale fillers on the heating and cooling times of hybrid yarn-based thermoplastic composites is investigated at the Institute for Textile Technology, Aachen. The goal of this presentation is to give a first technical and economic assessment of this effect.

**Jennifer Zhu**, Ford Motor Co.  
***Bio-Based Polyamides Reinforced with Cellulose Nanofibers — Processing & Characterization***

Bio-based polyamides, based on fully or partially renewable sources, are one of the most promising types of bioplastics due to their low density, good mechanical and thermal properties, and durability. These advantages make them key resins for automotive





# Abstracts of Speaker Presentations 2015

applications. In this study, cellulose nanofibers were successfully dispersed in bio-based polyamide matrices and the effect of loading levels on mechanical and thermal properties of the nanocomposites were investigated.

## Nanocomposites - Part 3 of 3: *Nanosilica & Nano Trends*

### **Kumar Kunal, Evonik Corp.** ***Damage Tolerant Automotive Composites with Nanosilica Modifications***

The poor toughness and fatigue performance and high cost of fiber reinforced composites presents significant challenges in their adoption in high-volume automotive structural parts. It has previously been shown that fatigue properties can be significantly improved by modification of the epoxy matrix resin with commercially available silica nanoparticles. This talk presents new results indicating that sufficient improvements are possible at much lower addition levels of silica nanoparticles, hence cost, if they are present at the fiber-matrix interface as part of the fiber sizing. This approach may open new avenues for cost-efficient manufacture of composite parts with outstanding service life even for high volume automobiles.

### **James Nelson, 3M** ***Nanosilica-Modified Epoxy Resins for Use in Lightweight Filament-Wound Drive Shaft Applications***

This presentation explores and illustrates the enhanced properties of filament-wound carbon fiber tubes resulting from significantly increased matrix stiffness. Properties for a high-modulus nanosilica-modified matrix resin and unfilled control resin were measured. Filament winding was used to create carbon fiber composite tubes using the resins. The axial and hoop stiffness of the tubes were measured and compared to theory. Lightweight driveshaft structures are featured through the application of the nanosilica resin technology.

### **Mark Shaw, UltraTech International, Inc.** ***New Nanotechnology Initiatives in the Automotive Market***

This talk will offer nanotechnologies that are commercialized or in the final stages before commercialization and are being used by or being evaluated by the auto industry. The topic will provide some insight into real-world nano-products and where they may have application within the automotive world. The result should be a quick overview of potentially game-changing products, showing the promise that we have all felt was possible in the nanotech world.

## — IN DIAMOND BALLROOM —

### Keynote 1

#### ***Carbon Fiber 2.0: Roadmap for Growth to 2020 and Beyond***

**Anthony Schiavo, Lux Research Inc.**

Carbon fiber-reinforced plastics (CFRPs) combine high strength and light weight, making these materials attractive to many industries. However, due to high costs and other technical hurdles, thus far their use has been restricted to high-end niche applications. In order to forecast the near- and mid-term penetration of CFRPs into both major and emerging target industries, we built a detailed cost model based on current and near-term production technology, and an industry demand model based on the needs and adoption cycles of each application. We further analyzed key technological, market, and regulatory factors likely to affect the long-term growth of the carbon fiber market to create a road map to large-volume automotive applications.

### Keynote 2

#### ***Institute for Advanced Composites Manufacturing Innovation (IACMI): A Disruptive Moment in Automotive History***

**Dr. Craig Blue, IACMI**

**Dr. Larry Drzal, IACMI Director - Vehicles Technology Area  
Michigan State University**

**Dr. Byron Pipes, IACMI Director - Modeling and Simulation  
Technology Area Pursue University**

**Brian Rice, IACMI Director - Compressed Gas Storage  
Technology Area University of Dayton Research Institute**

**Cliff Eberle, IACMI Director - Materials and Process  
Technology Area Oak Ridge National Laboratory**

The need to reduce CO<sub>2</sub> emissions and improve fuel economy is providing an impetus for developments in lighter weight materials and alternative powertrains. In order to realize commercial application in mass-produced vehicles for advanced composites, costs and cycle times both need to be reduced. Further, end-to-end simulation tools need to be integrated, validated, and made widely available to speed development time and improve confidence in their ability to predict as-built performance. The recently launched Institute for Advanced Composites Manufacturing, Innovation (IACMI) is integrating materials, manufacturing, and simulation development concurrently, to aggressively meet the needs of the automotive industry for hybrid and composite-intensive vehicle structures. This presentation will lay out the organization of the institute and summarize work planned and already underway to make advanced composites more competitive.



# Abstracts of Speaker Presentations 2015

THURSDAY, SEPTEMBER 10

— IN ONYX ROOM —

## Opportunities & Challenges with Carbon Composites - Part 1 of 2: *New Prepreg Technologies*

**Brian Gardner, Sigmatec Carbon Composite Solutions**  
***The Lightweighting Excellence Program: High-Throughput Composites for Automotive Applications***

Not available at press time.

**Michael Karcher, Fraunhofer Institute for Chemical Technology**  
***Evaluation of a New "InlinePrepreg" Process Approach to Established Processes for the Manufacturing of Structural Components out of Carbon Fibre Reinforced Plastics***

The Fraunhofer ICT has been developing a new direct process approach — called the InlinePrepreg (InPreg) process — that eliminates the freezing, thawing, and storing steps of conventional prepreg manufacturing. A goal of the new process is to use high levels of automation, a press process, and less costly raw material such as 50K tow carbon fiber to lower overall costs and thereby enable large-series production of carbon fiber-reinforced plastic (CFRP) parts. This paper researches properties of the InlinePrepreg material and compares it to other established manufacturing processes for CFRP. An economic analysis is also conducted based on a fictional geometry.

**Max Thouin, Mitsubishi Rayon Carbon Fiber & Composites**  
***Automated Solution to High Volume Manufacturing Using Low-Cost PCM TowPrepreg***

A new material format is being developed to overcome the limitations of traditional prepreg compression molding using automated fiber placement technologies. This new material allows significant cost reductions by eliminating the labor-intensive ply stacking operations and creating a fully automated production process. Most importantly, the localized deposition of fiber allows material waste to be cut from 30% down to approximately 3%. Calibrated width-towpreg offers a long needed alternative to traditional slit tape products. This presentation outlines a low-cost, fully automated solution suitable for series vehicle production.

## Opportunities & Challenges with Carbon Composites - Part 2 of 2: *Preforming, Woven Composites, & Lightweighting*

**Markus Thiessen, Compositence GmbH**  
***Preforming 2.0 – Leap Innovations for Automotive by Compositence***

Efficient preforming technology, combined with the ability to virtually design load-optimized parts are key drivers for cost-effective high-performance composite parts. The presentation will focus on a new preforming technology that allows tact times of 1-5 minutes, combined with low waste rates. Based on this technology, machines are now available for thermoset and thermoplastic applications as well as software for part design and production simulation. The presentation will focus on features of the technology, benefits for customers, scope of applications and provide application examples.

**Jon Goering, Albany Engineered Composites**  
***Application of 3D Woven Composites for Energy Absorption***

Due the presence of through-thickness reinforcement, 3D woven composites have superior fracture toughness, fatigue life, and damage tolerance compared to conventional laminated composites. These materials also exhibit a progressive damage behavior that is more benign than the brittle failure typical of laminated composites, and have high specific energy absorption (SEA). These properties make 3D composites attractive for applications that require lightweighting without sacrificing crashworthiness. The goal of this study was to demonstrate this capability by comparing the energy absorption performance of 3D woven composites to that of laminated composites.

**Brian Gardner, Sigmatec Carbon Composite Solutions**  
***Recycled Carbon Thermoplastic for Automotive Lightweighting***

SigmaRF is a recycled carbon fiber-reinforced thermoplastic fabric used to decrease production time of carbon composite part production while reducing overall vehicle weight. The carbon fibers used in the fabric are 100% recycled material utilizing trim wastestreams combined with a thermoplastic resin matrix. Fabric options vary from NCF multidirectional, woven, and spread fabrics.

**Stephen Greydanus, HEXION Inc.**  
***Advancements in Epoxy Technologies for Enabling Automotive Light-Weighting at High Build Rates***

One of the major challenges for lightweight materials, especially carbon fiber-reinforced (CFRP) composites, is that they are typically higher cost than incumbent metal designs. As such, successful commercialization depends on combining "smart" composite designs with materials and processes that improve cycle time and reduce waste. This presentation discusses several advancements in epoxy technology that are enabling the production of lightweight composites at high build rates and contributing to overall lower costs.



# Abstracts of Speaker Presentations 2015

## — IN OPAL/GARNET ROOM —

### Virtual Prototyping & Testing - Part 4 of 5: *Fiber Orientation*

**Gregory Lambert**, Virginia Polytechnic Institute and State University

#### ***Assessing the Performance of the Bead-Rod Model for Simulating Long Fiber Orientation in Basic Flows***

This study considers the change in orientation of long glass fibers while undergoing shear and planar elongational deformation for the purpose of obtaining empirical parameters in an orientation evolution model. Planar elongation attains a high degree of flow-alignment much faster than shear, and hydrodynamic interactions appear to be much more important than direct fiber contacts when compared to shear.

**Sebastian Goris**, University of Wisconsin-Madison  
\*\*2014-2015 ACCE scholarship winner\*\*

#### ***Fiber Orientation Measurements Using a Novel Image Processing Algorithm for Micro-Computed Tomography Scans***

Measuring the microstructure of fiber-reinforced composites is an important tool for process simulations and quality assurance. A novel image processing algorithm has been developed that accurately quantifies the fiber-orientation distribution in fiber-reinforced composites for a wide range of different material combinations. The algorithm uses basic projection theory, which offers a concise and time-efficient method to analyze the fiber-orientation distribution from micro-computed tomography ( $\mu$ CT) scans.

**Dhanendra Kumar Nagwanshi**, SABIC

#### ***Plastic Hybrid Solutions in Truck Body-in-White Reinforcements and in Front Underrun Protection***

With new and evolving safety regulations and stringent emission standards, automotive OEMs are exploring non-traditional lightweight multi-material solutions for structural components in vehicle body. This presentation covers thermoplastic-based metal and composite hybrid solutions for body-in-white (BIW) reinforcement for cabin safety regulations and front under-run protection devices for heavy motor vehicles as an alternative to incumbent solutions.

### Virtual Prototyping & Testing - Part 5 of 5: *Anisotropy Modeling*

**Roger Assaker**, e-Xstream engineering

#### ***Fiber Reinforced Plastic Durability: Nonlinear Multi-Scale Modeling for Structural Part Life Predictions***

To tackle fiber-reinforced plastic durability, engineers look forward to accounting simultaneously for manufacturing process and

nonlinear behavior. Both aspects are classically supported by multi-scale modeling, as demonstrated in this presentation. In particular, multi-scale modeling efficiently predicts different structural part lives for different fiber orientations or matrix nonlinear behaviors.

**Doug Kenik**, AutoDesk, Inc.

#### ***Bridging the Gap: As-Manufactured Structural Simulation of Injection Molded Plastics***

This presentation discusses a new solution to seamlessly link the results of injection molding simulation with nonlinear material responses in structural finite-element analysis (FEA). The software features new methods to map data from manufacturing simulation to structural simulation, and a novel multi-scale progressive failure model for short fiber-filled plastics. Also described will be the theoretical foundations and capabilities of the software, in addition to validating the methodology against experimental data.

**Roger Assaker**, e-Xstream engineering

#### ***Anisotropic Damping Behavior of Reinforced Plastic Parts for NVH Simulations***

A multi-scale finite-element method is proposed to numerically characterize the stiffness and damping behavior of a short glass fiber-reinforced material, including the dependencies to frequency, loading angle, fiber orientation, and fiber volume fraction. In a second step, the micromechanical material model enriched with these damping data is applied on a car's roof front beam on a typical frequency response finite-element analysis to study its effect on the predicted part's behavior.

**Don Robbins**, Autodesk, Inc.

#### ***Progressive Failure Simulation of As-Manufactured Short Fiber Filled Injection Molded Parts: Validation for Complex Geometries and Combined Load Conditions***

This presentation discusses validation efforts for novel finite-element software that is used to seamlessly link the results of injection molding simulation to subsequent nonlinear structural-response simulation, thus allowing the user to simulate the structural response of the actual as-manufactured configuration of a short fiber-filled, injection molded plastic part. In particular, the presentation describes the process of characterizing short fiber-filled plastics using simple uniaxial tensile data, and the use of the characterized material model in simulating the failure of injection molded cruciform specimens that are loaded in biaxial tension. The theoretical foundations and software capabilities are discussed in a companion presentation.



# Abstracts of Speaker Presentations 2015

## — IN EMERALD/AMETHYST ROOM —

### Advances in Thermoset Composites – Part 2 of 2:

#### **Mike Gruskiewicz, A. Schulman - Engineered Composites** ***A New Approach to SMC Weight Reduction***

This presentation examines a new approach to SMC weight reduction using a renewable resource filler to replace mineral filler in SMC. At a filler specific gravity of 1.1, compared to 2.7 for calcium carbonate, the filler achieves weight savings while offering the capability to sequester carbon and support the American farm economy. The filler is derived from soy hulls, a by-product of food and soy oil production, providing an outlet for a low value component as soy production continues to expand. A comparison of key performance attributes is presented relative to other SMC weight-reduction options.

#### **Marcel Bruijn, Huntsman Polyurethanes** ***Latest Generation of Polyurethane Resins with Superior Process Control for Fast-Cycle Manufacturing of Structural Composites***

The use of high performance composites is growing fast in many markets including automotive. Now novel polyurethane resins have been developed with unique reaction characteristics without compromising on the typical excellent mechanical properties. This latest generation of polyurethane resins has a significantly longer injectable time followed by a fast cure. This enables a more cost-effective, high-volume production of high-performance composite parts for the automotive market.

#### **Sigrid ter Heide, HEXION Inc.** ***A Life Cycle Assessment-Based Comparison of Engineering Thermoset and Aluminum in an Automotive Under-the-Hood Application***

The automotive industry is looking for options to reduce weight and increase engine efficiency to comply with new CO<sub>2</sub> emission and fuel-economy regulations. Substituting lighter weight materials may involve important tradeoffs such as those to the environment. Life cycle assessment (LCA) is a holistic approach to evaluating the potential environmental impacts of a product or process. An LCA incorporates all of the product manufacturing steps starting with raw material in-the-ground, on-the-hoof, or on-the-stalk, through the ultimate management of the product and its residuals at the end of their life. This presentation will discuss a comparative LCA on an automotive water pump housing manufactured with a thermoset composite resin relative to an alternative water pump housing manufactured from aluminum. The LCA results appear to support the conclusion that the lighter weight thermoset composite water pump housing has environmental benefits relative to the alternative aluminum water pump housing. LCA results can provide engineers and designers a (more) rational basis for comparing alternatives when used in conjunction with life cycle cost and product performance data.

### Advances in Thermoplastic Composites

#### **Yankai Yang, Hanwha Azdel Inc.** ***Development of Lightweight Reinforced Thermoplastic with Improved Stone Impingement Resistance for Automotive Underbody Application***

This paper discusses the development of a lightweight reinforced thermoplastic (LWRT) product with improved stone impingement resistance for car underbody-shield application. The effect of the core formulations and skin materials on the stone impact performance was investigated. The study led to the design of an LWRT product with improved stone impingement property.

#### **Eric Wollan, PlastiComp, Inc.** ***Hybrid Long Fiber Thermoplastic Composites: A Perfect Blend of Performance and Cost***

A look at development trials for hybrid blends of long-glass and long-carbon fiber-reinforced thermoplastic composites was done. Can combinations of these fiber types bridge the performance gap between using them individually and lower the cost-to-entry barrier for adopting long-carbon fiber thermoplastic composite technology?

#### **Cécile Demain, Solvay** ***Thermoplastic Composite Structural Part for Truck Market Application***

This presentation describes the collaboration between members of a thermoplastic composite value chain — a European commercial truck OEM, Solvay (resin supplier), HBW-Gubesch (manufacturer), Sika (adhesive supplier), and Bolhoff (fastener supplier). The companies contributed on the successful development of a lightweight structural part for the truck market. The objective was to replace metal with thermoplastic composite while reducing mass 25%. To reach this target and fulfill OEM requirements, design and simulation were key and will be described.

#### **Jacob Anderson, PPG Fiber Glass Reinforcement Technology Center** ***\*\*2015 Dr. Jackie Rehkopf Best Paper Award winner\*\****

#### ***Effect of Processing Technique on the Mechanical Performance of Glass Fiber Reinforced Thermoplastics***

In the present work, thermoplastic bulk-molding compound (BMC) is investigated to determine its mechanical performance relative to granulated long-fiber thermoplastic (GLFT) and continuous fiber-reinforced thermoplastic tape (CFRT). This was achieved by using injection and compression molding to fabricate thermoplastic composite parts using GLFT, CFRT, and BMC. The BMC was shown to exhibit improvements in flex and impact performance of 100% and 20%, respectively, greater than the GLFT specimen.



# Abstracts of Speaker Presentations 2015

## — IN DIAMOND BALLROOM —

### Keynote 3

#### ***Owning the Future: Sustainable Materials Research, Development & Implementation at Ford***

**Deborah Mielewski, Senior Technical Leader of Sustainable Materials and Plastics Research  
Ford Motor Co.**

The Ford biomaterials research program was initiated in 2001, and the group was the first to demonstrate soy-based foam that met all the requirements for automotive seating. Ford and Lear launched soy-based foam on the 2008 Mustang, and soy seat cushions and backs have now found their way into every Ford North American-built vehicle. Bio-based foams currently reduce greenhouse gas emissions by over 25-million pounds and reduce petroleum dependence by over 5-million pounds annually. The biomaterials research team continues to pioneer the development of sustainable plastic materials that meet stringent automotive requirements, including natural fiber-reinforced plastics and polymer resins made from renewable feedstocks. Ford currently has 8 renewable materials in production vehicles, making them a leader in automotive. Ford scientists are continuing to search for innovative and creative bio-technologies that can reduce our dependence on petroleum, create new markets for agricultural products and additional revenue streams for farmers, as well as reduce vehicle weight, which results in improved fuel efficiency and lower vehicle emissions. The past year, we have begun investigating cellulose nanofibers (CNF, CNC, cellulose filaments) because of their larger surface area, greater aspect ratio, and fascinating properties.

### Keynote 4

#### ***Mass Production of CFRP in Automotive Applications – Potential and Challenges in Implementing Local Reinforcements***

**Stefan Stanglmaier, Technologieentwicklung CFK Material- und Prozessabsicherung  
BMW Group**

In 2013 the BMW Group put the fully electric *BMW i3* and in 2014 the hybrid super sports car, the *BMW i8* on the market. Both cars have a two-piece chassis, in which the lower (Drive-Module plastic) primarily consists of aluminium and the passenger cell (Life-Module) is constructed from carbon fibre-reinforced plastic (CFRP). BMW successfully implemented CFRP fabrication processes for the production of the Life-Module components of both cars with an automation level and cycle times suitable for mass production. From the experience gained from the production of structural CFRP components, the BMW Group applied different promising approaches on how to further improve the methods and techniques of current production systems. Based on this knowledge, the future focus of the advancements in the CFRP sector at the BMW Group will be on design and production of parts with maximum exploitation

of the material's mechanical potential, minimal material input, optimized weight, and with equivalent costs compared to other materials. This presentation will first look at the current production processes for the *BMW i3* and *BMW i8* as starting points to advance the current CFRP production systems, and then provide perspective on future development projects. As an example of these projects, several results will be shown from one venture enhancing the RTM (resin transfer molding) and Wetpressing processes for the production of local reinforced CFRP parts with the required properties at the process and component level.

## THURSDAY, SEPTEMBER 10

### — IN ONYX ROOM —

#### ***Enabling Technologies - Part 1 of 3: New Manufacturing Strategies***

**Chuck Buckley, Dassault Systèmes**  
***Business Intelligence to Help Define Composite Processes Measurements and Production Predictive Analytics***

Composite manufacturing is a complex process that continues to test the boundaries of a repeatable and reproducible production process. This presentation will focus on the use of a new innovation that applies patented predictive analysis tools, which have been proven to significantly reduce the costs of composite component scrap, rework, and repair. While analyzing the complex process, this approach helps manufacturers to define those critical characteristics that should be measured and have the greatest level of impact on the process outcome. Production rules are defined and able to be institutionalized so that the factory floor can be advised, in a predictive manner, of pending production issues.

**Burak Uzman, Coriolis Composites SAS**  
***Automated Manufacturing for Mass Production and Low-Cost Materials***

The next challenges for composites manufacturing will be to address high-volume production and very-complex parts, especially for the automotive industry. Both machine manufacturers and simulation software editors must develop breakthrough technology: low-cost materials, scrap and mass optimization, high-volume layup machines, and accurate numerical simulation of thermo-forming process. Developments in those domains, using a strong know-how of automated fiber placement processes and aerospace industry projects, will be shown. Next a technology proposal is described, including machine concept, materials to be processed, productivity and process issues, like material capability to be processed at high speed, or preform optimization regarding impregnation or forming issues. Projects done with automotive OEM and tier 1 will conclude the presentation to illustrate the technology developments.



# Abstracts of Speaker Presentations 2015

**Andrew Rypkema, Pinette Emidecau Industries**

***QSP: A Breakthrough Approach for Automating High Performance Thermoplastic Composites***

The quilted stratum process (QSP) is a breakthrough approach for automating the manufacture of high-performance thermoplastic composites. QSP allows for use of a wide variety of materials in the design and production of a thermoplastic composite parts. With this new robust manufacturing process QSP attains the desirable goals of using high-performance, continuous-fiber-reinforced composite materials, low cost, and short cycle time simultaneously.

— IN OPAL/GARNET ROOM —

Sustainable Composites -  
Part 1 of 2: *Reinforcements*

**Amy Langhorst, Ford Motor Co.**

**\*\*2015 Dr. Jackie Rehkopf Best Paper Award winner\*\***

***Selective Dispersion and Compatibilizing Effect of Cellulose Filler in Recycled PA6 / PP Blends***

The environmental impact of automobiles can be reduced by using combinations of recycled polymers and natural reinforcements to replace traditionally unfilled, glass-filled, and talc-filled polymeric components. Composites containing recycled polypropylene, recycled polyamide 6, and cellulose were produced using a twin-screw extruder and injection molding. The resulting properties were investigated on a microscopic (scanning electron microscope) and macroscopic (mechanical and thermal properties) scale.

**Niloofer Yousefi Shivyari, University of Maine**

***All-Renewable Paper Nano-Laminates for Automotive Applications***

This research aims at producing paper nano-laminates using relatively new and sustainable cellulose nanofibrils (CNF), which act as both the binder and the reinforcing agent for layers of paper. Upon optimization, the nano-laminates could exhibit high mechanical properties. They can have various thicknesses, are fully renewable, biodegradable, and lightweight, and also are hydroformable both during and after forming.

**William Jordan, Baylor University**

***Improving the Properties of Banana Pseudo-Stem Fiber LDPE Composites by Chemically and Thermally Treating the Fibers***

This project used fibers from the pseudo-stem of the banana plant. One of the problems with using plant fibers in a polymer matrix is the fiber's natural tendency to absorb moisture, which leads to a weakening of the overall strength of the fiber, as well as problems with interfacial bonding between fiber and matrix. This presentation examines ways of mitigating this through chemical treatments that serve to lower the hydrophilicity and/or increase surface roughness to improve interfacial bonding.

— IN EMERALD/AMETHYST ROOM —

Advances in Reinforcement Technologies

**Hendrik Mainka, Volkswagen AG**

***Raman and X-ray Photoelectron Spectroscopy: Useful Tools for the Chemical Characterization of the Conversion Process of Lignin to Carbon Fiber***

Today's limitation for the use of carbon fiber is the cost of the conventional carbon fiber precursor, poly-acrylic-nitrile (PAN). Around 50% of the cost of a conventional carbon fiber belongs to the PAN precursor. Lignin as a precursor for carbon fiber production can realize enormous cost savings. For qualifying lignin-based carbon fiber for automotive mass production, a detailed characterization of this new material is necessary. Therefore Raman and X-ray photoelectron spectroscopy are used, details of which are covered in this presentation.

**Christopher Pastore, Philadelphia University**

**\*\*2015 Dr. Jackie Rehkopf Best Paper Award winner\*\***

***Lightweighting Composites Through Selective Fiber Placement***

The underlying idea is to use the more expensive carbon fiber only where needed through the use of a gradient hybrid material that incorporates glass everywhere else. The goal is a process that allows automation while optimizing weight and cost for a given structural element. Through a combination of theoretical and experimental evaluations, a methodology for evaluating the weight-cost efficiency of chopped fiber composites was developed and confirmed experimentally.

**David Jack, Baylor University**

***The Impact of Nozzle Shape & Convergence Flow on the Extrudate Fiber Orientation & Subsequent Stiffness in Fused Deposition Modeling***

Through the addition of discontinuous fiber reinforcements, such as chopped fiberglass or carbon fibers, the potential for structural components from the fused deposition modeling (FDM) process may become possible once the impact of the nozzle design on the resulting processed part stiffness is understood. This work presents a study, using physics-based modeling, of the impact the nozzle shape and convergence zone have on the extrudate's underlying fiber microstructure and the resulting spatially varying stiffness. Results indicate the nozzle geometry causes significant fiber alignment, but this alignment is reduced measurably by the extrudate swell prior to deposition thus reducing the resulting part stiffness.



# Abstracts of Speaker Presentations 2015

## — IN DIAMOND BALLROOM —

### Panel Discussion

***Carbon Steel to Carbon Composites – Can the Existing Automotive Infrastructure be Leveraged to meet Lightweighting Targets?***

**Jan-Anders Månson, Moderator**

Laboratory of Polymer and Composite Materials (LTC), Ecole Polytechnique Federale de Lausanne (EPFL),

**Panelists: Glade Gunther, Cytec Industries Inc.;**

**Paul Krajewski, General Motors Co.;**

**Peter Ulintz, Precision Metalforming Association;**

**Rainer Kossak, Ph.D., Novelis Inc.;**

**Markus Geier, Schuler Inc.;**

**Gary Maddocks, Zapp Tooling Alloys Inc.**

A major barrier to the penetration of high-performance composites in automotive structures is the large investment in legacy processes, such as sheet-metal stamping, and the lack of a large supply chain for composites. Recent developments in “stamp forming” of both thermoset and thermoplastic continuous composite sheet materials offers intriguing possibilities to convert some existing assets, such as steel presses, to forming composite materials. How practical is this approach and what considerations must be taken into account in order to prove that it could work? This panel will explore these and other questions representatives from traditional press and tool-&-die companies, along with composite material suppliers, Tier 1 molders, and OEMs participating in the discussion.

---

## FRIDAY, SEPTEMBER 11

## — IN CRYSTAL/SAPPHIRE/RUBY ROOM —

Enabling Technologies - Part 2 of 3:  
*Advances in RTM Technology*

**Tobias Jansen, Hennecke GmbH**

***The HP-RTM Technology – Actual Status and New Developments***

Due to increasing requirements for efficiency and ecology, interest in lightweight solutions for the automotive industry has been growing. The focus is especially on one process: resin transfer moulding (RTM), which is the topic of this presentation.

**Philipp Rosenberg, Fraunhofer Institute for Chemical Technology**

***Characterization of Epoxy and Polyurethane Resin Systems for Manufacturing of High-Performance Composites in High-Pressure RTM Process***

The high-pressure RTM (HP-RTM) process is a manufacturing technology capable for high-volume production of fiber-reinforced plastics (FRPs) in the automotive industry. The presented study characterizes 2 matrix materials, epoxy and polyurethane resins, adapted for use in HP-RTM equipment for their process-specific behavior and mechanical properties. The results demonstrate potentials of different matrix materials in the HP-RTM process combined with basic mechanical properties in combination with carbon fiber reinforcements.

**Ian Swentek, Fraunhofer Project Centre for Composite Research at the Western University**

***Impact of HP-RTM Process Parameters on Mechanical Properties using Epoxy and Polyurethane***

High-pressure resin transfer molding is used to process glass and carbon fiber composites with epoxy and polyurethane. Three process parameters are varied and their impact on mechanical properties is measured. The results document the critical process parameters and build upon the HP-RTM best practices as previously reported.

**Erich Fries, KraussMaffei Technologies GmbH**

***Light Weight Technology — New Approach Thermoplastic RTM / Surface RTM and Fiber Form Technology***

For many years, KraussMaffei has been working with widely varying processes for manufacturing parts made of fiber-reinforced plastic (FRP). These processes have traditionally evolved from injection molding technology and reaction technology (polyurethane/epoxy). The latest demands in the markets are for highly automated processes like Fiber Form and the use of less costly raw materials e.g. polyamide 6 (T-RTM).

Enabling Technologies - Part 3 of 3: *NDT, Direct Fiber Feeding, & Hybrid Vehicles*

**Jan Olav Endrerud, DolphiTech AS**

***Non-Expert NDT Solution for Composite Materials in the Automotive Industry***

Composite materials are being used in the automotive industry at an increasing pace. As these materials are being used in primary structures, new inspection methods are needed both in manufacturing and during the life time of the vehicle. Visual inspections may be sufficient on metallic structures, but cannot be trusted on composite parts. Limitations on visual inspections are discussed, and methods for a scalable non-destructive testing (NDT) solution for structural composite parts are proposed.



# Abstracts of Speaker Presentations 2015

**Martino Lamacchia, Cannon USA**

***An Innovative Solution for the Production of PUR-Based Reinforced Composite Parts for the Latest Hybrid Vehicles***

The presentation covers an innovative approach to the manufacturing of a glass-reinforced polyurethane-based transverse leaf spring for the rear multilink suspension of the new *Volvo XC 90* SUV manufactured by Benteler-SGL, on a Benteler Maschinenbau line with Cannon equipment. Particular focus is given on how the HP-RTM process made possible the mass production of several-hundred thousands of these component annually in an automated and repeatable way.

**Ingo Valentin, Valentin Technologies, LLC**

***Cost Efficient Composite Platform with Integrated Energy Storage for a Hydraulic Hybrid***

The Hydraulic Hybrid is based on a composite platform with an integrated hydrostatic drivetrain and accumulator. The energy-storing and load-carrying accumulator results in ultra-low weights for the platform and a simplified car body. The improvements in weight and efficiency reduce both fuel consumption (1.22 L/100 km / 193 MPG) and CO<sub>2</sub> emissions (32.4 g/100 km) dramatically.

— IN OPAL/GARNET ROOM —

Sustainable Composites - Part 2 of 2:  
*Polymers & Trends*

Sustainable Composites  
Roundtable Discussion

**Henning Karbstein, BASF Corp.**

***Acrodur® Natural Fiber Composites: New Opportunities with Thermoplastic Binder***

Natural fiber composites with non-woven materials and fibers from kenaf, hemp, or flax are well known in the automotive industry as a smart, lightweight alternative for interior panels. BASF's water-based thermoset binder technology is an alternative to thermoplastic forming with polypropylene prepregs. In 2015, an innovative, new water-based binder was developed that also allows for thermoplastic processing, similar to polypropylene, but achieves higher mechanical properties. This presentation discusses processing options and mechanical performance data as a direct comparison to incumbent materials.

**Andrea Birch, Ford Motor Co. / University of Waterloo**

***Development of Cost Effective and Sustainable Polyamide Blends for Automotive Applications***

Recent years have witnessed an enormous expansion of research and technology developments especially in the automotive industry on bio-based polyamides. In spite of the increasing scientific and industrial activity, there is still one major problem associated with bio-based polyamides in general: their relatively high cost vs. their petrochemical homologues. In this research, we report on a cost-effective and sustainable approach for the development of lightweight and high strength and modulus materials for automotive applications using composites based on a bio-based polyamide (PA) 6/10 and recycled PA 6 (RPA 6) blend with cellulose fibers. These materials not only provide good mechanical and thermal properties but are lighter than glass-reinforced composites for the automotive industry.

**Atul Bali, Competitive Green Technologies**

***Light-Weighting Opportunities using Bio-Materials in Automotive Applications***

A very significant opportunity exists in automotive applications — particularly for injection molded parts — to use natural fibers like perennial grasses as fillers that have remarkable reinforcement properties and can be, through creative chemical bonding, compatibilized with polymer matrices to create strong bonding. Also key is development of a drop-in substitute bio-resin that is price-performance competitive and above all process compatible with prevailing injection molding tools. When combined with thin-walling techniques, this can provide an opportunity for a 'running change' on a given platform and offer mass savings of 10-20% at no cost or process penalty and without sacrificing performance.

Bonding, Joining & Finishing

**Michael Day, American Chemistry Council - Plastics Division**

**Mahmoodul Haq, Michigan State University**

***Efficient Assembly & Joining: Reversible Bonded Joints Using Nano-Ferromagnetic Particles***

CAR and MSU/CVRC have partnered to investigate an innovative joining technique along with its cost-benefit analysis. The MSU/CVRC research explores reversible bonding using nano-ferromagnetic particles in thermoplastic adhesives. CAR's business case study deals with a cost-benefit analysis model for the joining technology benchmarked by the conventional steel joining.



# Abstracts of Speaker Presentations 2015

## — IN DIAMOND BALLROOM —

**Ryan Schuelke, Enercon Industries**

### ***Implementing Plasma & Flame Surface Treating Technologies to Improve Adhesion with Composite Materials***

In-line surface treatment technologies are used to clean, micro-etch, and functionalize surfaces to promote adhesion, improve quality, and increase productivity. Learn how atmospheric plasma and flame surface treating technologies effectively improve the surface properties of composite materials for bonding with inks, adhesives, and coatings. And find out how they can be efficiently integrated into production lines to maximize output.

**Andy Stecher, Plasmatrete USA, Inc.**

### ***Surface Treatments for Better Performance and Automation in Composite Bonding and Manufacturing***

Atmospheric plasma is a touchless and workplace-safe alternative to traditional wet chemical and/or mechanical surface preparation methods before CFRP part are joined or bonded to dissimilar substrates. Atmospheric plasma enables high speed and fully automated surface conditioning for large areas. Plasma coating of molds also can replace conventional mold release chemistry with a non-transferable plasma deposited release film.

## — IN EMERALD/AMETHYST ROOM —

### Tutorials

**Louis Dorworth, Abaris Training Resources**

### ***Adhesive Bonding of CFRP Composites: Practices and Principles***

This interactive tutorial provides a comprehensive look at common industry practices and the basic scientific principles involved in adhesive bonding of CFRP composite materials. This presentation will focus on universal methods and techniques used to achieve durable and consistent adhesive bonds in both manufacturing and repair of these structures. The talk includes an overview of modern surface analysis equipment and a primer on testing methods and failure modes.

**Karen Stoeffler, National Research Council Canada (NRCC)**

### ***Biomaterials for Automotive Applications***

This 60-minute tutorial will cover the basics in designing sustainable plastic and composite materials for automotive applications to replace conventional petroleum-based materials. The emphasis will be on incorporation of polymers and reinforcements (particles, short and long fibers) sourced from renewable, non-edible resources in automotive components. Challenges related to the formulation, fabrication, properties, and cost of those materials will be discussed. Specific issues such as odor emissions, moisture sensitivity, and durability also will be covered.

### Keynote 5

### ***Zenos E10: A Platform for Novel Lightweight Automotive Composite Structural Design***

**Antony Dodworth, Chief Technology & Manufacturing Officer, Brite Lite Structures**

The *Zenos E10* is a new English sports car designed as a modern take on the famous *Lotus 7*. The vehicle features low-cost composite chassis structure that functions as both interior and exterior, requires minimal body work, and is self-jigging and can be slotted together. The structure uses a unique new honeycomb-sandwich composite that meets or exceeds the compression, stiffness, and torsional rigidity required for the vehicle's chassis. Because of the nature of the sandwich structure, it enables the use of complex, deep-draw designs, which are not otherwise possible without preforming and which enable significant reductions in part count and bill-of-materials vs. structures in steel, aluminum, or monolithic carbon composite. This presentation will detail development of the novel structural composite made with thermoplastic honeycomb cores and polyurethane chemistry including recycled carbon fiber and polycarbonate. Complete curing and fabrication cycle time is under 10 minutes using patent-pending methods. Parts can be produced in a low-cost manufacturing cell capable of producing up to 15,000 parts/year using off-the-shelf presses, and spray and robotic equipment.



REGISTER TODAY!



# Extrusion 2015

**November 2-3, 2015**  
Omni Charlotte Hotel / Charlotte, NC

The Extrusion 2015 conference is a first-of-its kind event devoted to all aspects of extrusion processing. Developed by *Plastics Technology*, this two-day conference will consist of morning sessions devoted to technical and business issues common to all types of extrusion, followed by breakout sessions devoted to specific types of extrusion.

**MORNING SESSIONS INCLUDE:** MATERIALS • ADDITIVES  
HIGH-SPEED PROCESSING • SCREW DESIGN • ENERGY EFFICIENCY  
FILTRATION • BLENDED • DRYING • CONVEYING • FOAMING • PURGING  
SIMULATION AND MORE!

**AFTERNOON TRACKS:** FILM/SHEET • COMPOUNDING • PIPE/PROFILE/TUBING

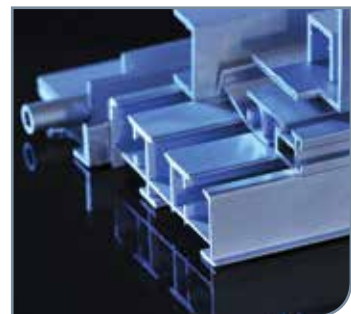
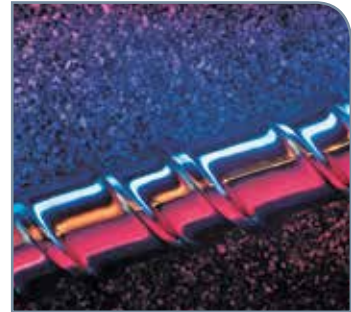
You'll leave Extrusion 2015 with the information and contacts your business needs to increase productivity, cut costs and save time!

Presented by:



## REGISTER TODAY!

[ExtrusionConference.com](http://ExtrusionConference.com)



Photos courtesy of (top to bottom):  
Teel Plastics; Davis Standard; Dow Chemical Co.;  
Getty Images/iStockphoto

Platinum Sponsors:



Gold Sponsors:

C.W. Brabender Instruments, Inc.  
Davis-Standard  
Foremost Machine Builders, Inc.  
Gala Industries, Inc.

Nordson Corporation  
Process Control Corporation  
Processing Technologies International LLC  
Uway Extrusion  
Windmoeller & Hoelscher Corp.

Bronze Sponsors:

ACS Group  
Beckhoff Automation  
PSI - Polymer Systems, Inc.

The Advanced Team, Inc.  
Wittmann Battenfeld



# SPE® Accepting Donations for Dr. Jackie Rehkopf Endowed Scholarship

The SPE® Automotive and Composites Divisions, in conjunction with The SPE Foundation, have formed an endowed scholarship to honor the memory of Dr. Jackie Rehkopf and are now accepting donations. The groups hope to raise funds for a sufficiently large endowment to allow an annual scholarship to a deserving undergraduate or graduate student studying engineering or science and with plans to work in the field of transportation composites.

Rehkopf spent her career doing research in the field of automotive plastics and composites. She was a long-time SPE ACCE committee member, session organizer, and two-times technical program co-chair. She also served on the SPE Automotive Division board as a director from 2005 through 2014, plus was intersociety chair for 2 years and treasurer for 2 years. She was active from the mid-1990s until 2014 with SAE International®, helping organize a large plastics session for over a decade for SAE Congress. Additionally, she wrote a book in 2011 entitled Automotive Carbon Fiber Composites: From Evolution to Implementation that was published by SAE. She was awarded an SAE Outstanding Technical Contribution Award for her work in co-developing and sponsoring the SAE Standard J2749 High Strain Rate Tensile Testing of Polymers. She authored many publications and presented at numerous technical conferences during her 20 year career.

In both academia and industry, Rehkopf's research interests were in mechanics of materials. After earning both B.S. and Ph.D. degrees in Civil Engineering from the University of Waterloo in Canada, she moved to the Detroit area and began work in 1994 as a materials engineer for Ford Motor Co. After 4 years, she became a technical specialist at Ford in the company's Research Lab Safety Department (from 1998-2003) and later in the Materials Engineering Department (from 2003-2006). She left the automaker in 2006 to join Exponent as a senior engineer and consultant in the areas of mechanics of materials, structural mechanics and dynamics, experimental testing, and failure analysis. Rehkopf's expertise was in high-strain-rate behavior of both metallic and polymeric materials, and fatigue and creep of reinforced and non-reinforced plastics. In 2010, she joined the R&D department of Plasan Carbon Composites as a senior researcher working on carbon fiber-reinforced composites. During her first 2 years at Plasan, she split her time between the company's Customer Development Center in Michigan and offices at Oak Ridge National Laboratory where she was principal investigator for a 3-year U.S. Department of Energy (DOE)-sponsored project that Plasan participated in on predictive modeling of carbon fiber composites in automotive crash. In 2013, Rehkopf became director of research at Plasan with a focus on developing new materials systems to facilitate the use of carbon fiber composites in mainstream automotive applications. She lost a year-long battle to cancer last summer.



THE SPE FOUNDATION

## How to Contribute

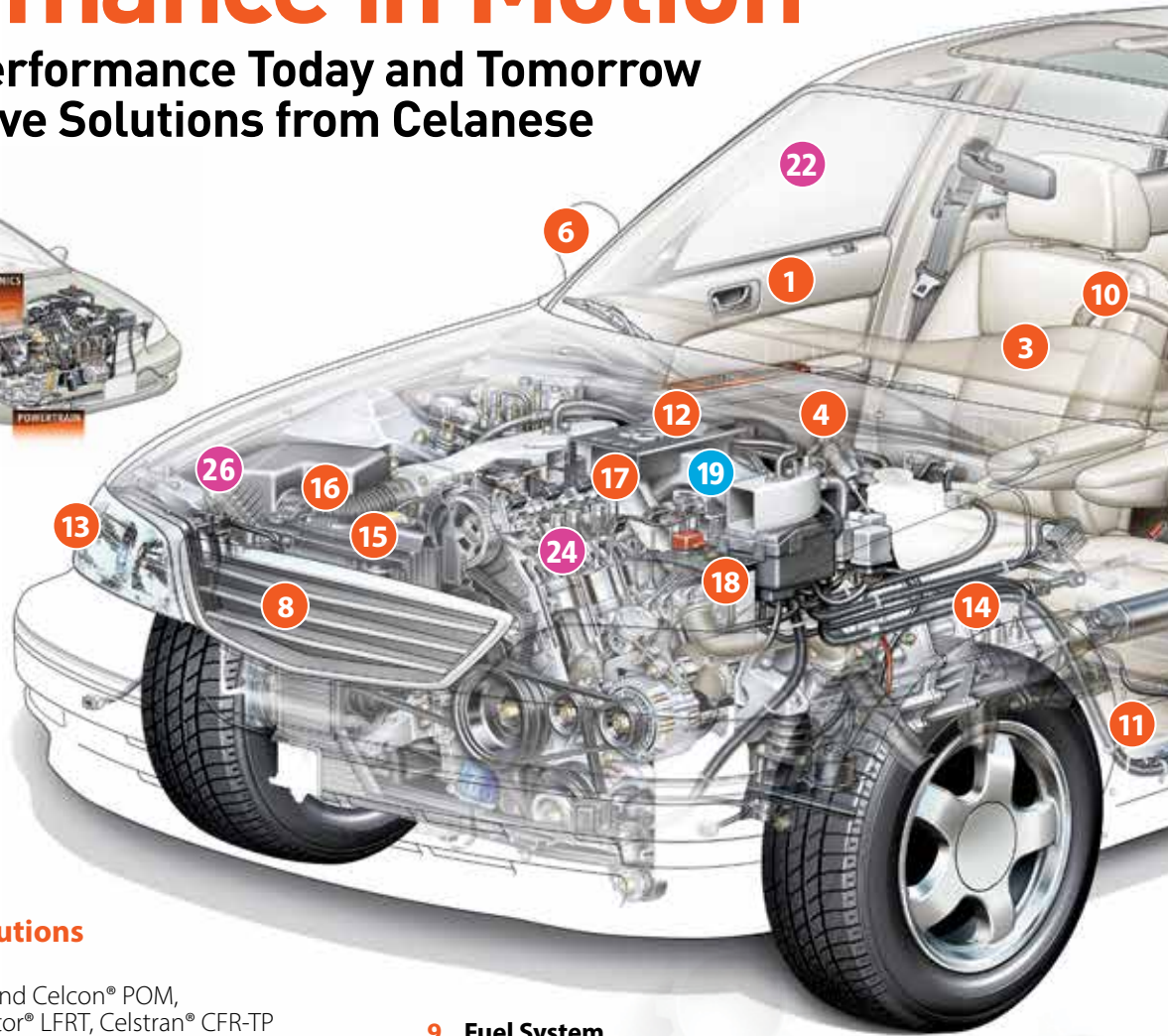
Those interested in contributing to the Dr. Jackie Rehkopf endowed scholarship should send a check (made out to The SPE Foundation) to:

The SPE Foundation - Rehkopf Scholarship  
Attn: Gene Havel  
6 Berkshire Blvd, Suite 306  
Bethel, CT 06801 USA

PLEASE mark in the Notes section of your check that the funds are for the **Rehkopf Scholarship** so they are applied to the correct fund. Then please send an eMail to [News@SPEAutomotive.com](mailto:News@SPEAutomotive.com) and let us know how much you have contributed so we can keep track of the scholarship. For more information, call +1 203.740.545j7 or email [foundation@4spe.org](mailto:foundation@4spe.org). Donations made by U.S. citizens are tax deductible.

# Performance in Motion™

Power Your Performance Today and Tomorrow  
With Automotive Solutions from Celanese



## Integrated System Solutions

### 1 Door Modules

Celanex® PBT, Hostaform® and Celcon® POM, Celstran®, Compel® and Factor® LFRT, Celstran® CFR-TP

### 2 Seating and Restraint

Celanex® PBT, Hostaform® and Celcon® POM, Celstran®, Compel® and Factor® LFRT, Celstran® CFR-TP, Riteflex® TPC-ET, Vandar® PBT

### 3 Instrument Panel – Celstran®, Compel® and Factor® LFRT

### 4 Wiper/Washer

Celanex® PBT, Hostaform® and Celcon® POM

### 5 Sunroof

Celanex® PBT, Hostaform® and Celcon® POM, Celstran®, Compel® and Factor® LFRT

### 6 Mirror

Celanex® PBT, Hostaform® and Celcon® POM, Celstran®, Compel® and Factor® LFRT

### 7 Fasteners and Supports

Hostaform® and Celcon® POM

### 8 Front and Rear End Modules

Celanex® PBT, Impet® PET, Hostaform® and Celcon® POM, Celstran®, Compel® and Factor® LFRT

### 9 Fuel System

Celanex® PBT, Hostaform® and Celcon® POM, Fortron® PPS, Riteflex® TPC-ET

### 10 Cockpit

Celanex® PBT, Hostaform® and Celcon® POM, Celstran®, Compel® and Factor® LFRT, Riteflex® TPC-ET, Vandar® PBT

### 11 Chassis

Celstran®, Compel® and Factor® LFRT, Celstran® CFR-TP

### 12 Cross Car Beam – Celstran® CFR-TP

### 13 Lighting – Front and Rear

Celanex® PBT, Vectra® and Zenite® LCP, Fortron® PPS, Thermx® PCT

### 14 Powertrain – Transmission

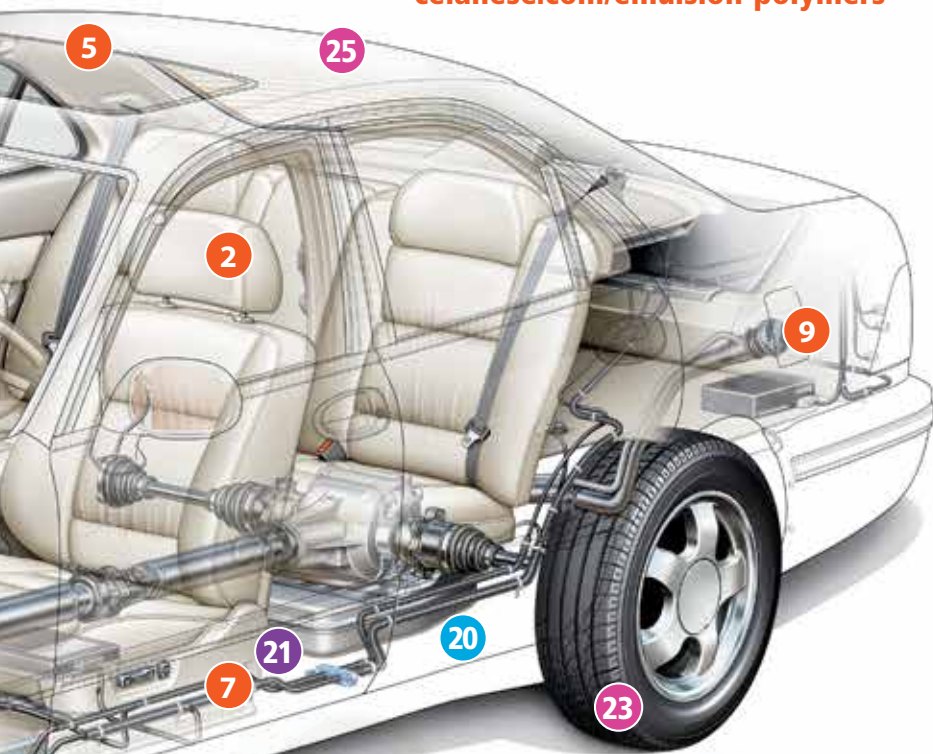
Celanex® PBT, Celstran®, Compel® and Factor® LFRT, Fortron® PPS, Vectra® and Zenite® LCP, Thermx® PCT

### 15 Powertrain – Water Management

Celanex® PBT, Celstran®, Compel® and Factor® LFRT, Fortron® PPS, Vectra® and Zenite® LCP, Thermx® PCT



[celanese.com/engineered-materials](http://celanese.com/engineered-materials)  
[celanese.com/intermediate-chemistry](http://celanese.com/intermediate-chemistry)  
[celanese.com/eva-polymers](http://celanese.com/eva-polymers)  
[celanese.com/emulsion-polymers](http://celanese.com/emulsion-polymers)



**16 Powertrain – Air Management**

Celanex® PBT, Celstran® Compel® and Factor® LFRT, Fortron® PPS, Vectra® and Zenite® LCP, Thermx® PCT

**17 Powertrain – Engine**

Celanex® PBT, Celstran®, Compel® and Factor® LFRT, Fortron® PPS, Vectra® and Zenite® LCP, Thermx® PCT, Riteflex® TPC-ET

**18 Electronics**

Celanex® PBT, Impet® PET, Vectra® and Zenite® LCP, Fortron® PPS, Thermx® PCT, Hostaform® and Celcon® POM

**19 Filtration – Emulsion Polymers**

**20 Sound Dampening – Emulsion Polymers**

**21 Flooring – Carpet – Ateva® EVA Polymers**

**22 Safety Glass – Plasticizer WVC 3800**

**23 Tires – MIBK**

**24 Engine Lubricant – MIBC**

**25 Coatings – Polysolvan O®**

**26 Electrostatic Coatings – Monomethylamine**

**ENGINEERED MATERIALS**

**Celanex® Thermoplastic Polyester**

- Outstanding thermal and chemical resistance
- Toughness • Rigidity
- Exceptional dimensional stability
- Superior electrical properties

**Hostaform®/Celcon® Acetal Copolymer**

- Excellent mechanical properties
- Inherent lubricity • Chemical and fuel resistance
- Broad temperature use range
- Aesthetics including MetaLX™ colors and low gloss

**Celstran®, Compel® and Factor®**

**Long Fiber Reinforced Thermoplastics**

- High stiffness • Exceptional toughness
- Superior strength-to-weight ratio
- Long-term dimensional stability
- Wide temperature use range

**Celstran® Continuous Fiber Reinforced Thermoplastics**

- Low weight with high strength and stiffness
- Superior dimensional and thermal properties
- Wide range of resins and fiber reinforcement

**Fortron® Polyphenylene Sulfide**

- High continuous use temperature
- Resistance to auto fuels and fluids
- Inherent flame resistance
- High strength and dimensional stability

**GUR® Ultra-High Molecular Weight Polyethylene**

- Abrasion and chemical resistance
- Impact strength
- Self-lubricating properties/low coefficient of friction

**Impet® Thermoplastic Polyester**

- Superior thermal and chemical resistance
- Toughness • Rigidity • Dimensional stability
- Wide temperature use range

**Riteflex® Thermoplastic Polyester Elastomer**

- Excellent toughness and fatigue resistance
- Outstanding chemical resistance
- Good low temperature impact
- Wide temperature use range

**Thermx® Polycyclohexylene-Dimethylene Terephthalate**

- High temperature resistance
- High electrical properties • Dimensional stability
- Chemical and fuel resistance

**Vandar® Thermoplastic Polyester Alloys**

- Excellent chemical resistance, ductility and stiffness
- High impact strength at low temperatures

**Vectra®/Zenite® Liquid Crystal Polymer**

- Superior thermal characteristics and dimensional stability
- High strength and modulus
- Broad chemical resistance
- Excellent electrical properties
- Inherent flame resistance

**EVA POLYMERS**

- Sound dampening for excellent acoustics
- EVA polymers available in wide melt index range

**EMULSION POLYMERS**

- Low odor
- Imparts strength and fiber tie-down
- Engineered to maximize dirt attraction

**INTERMEDIATE CHEMISTRY**

**Plasticizer WVC 3800**

- High compatibility with a broad range of polymers
- High transparency
- Low water content and hydrophobicity
- Exceptionally low VOC content

**Methyl Isobutyl Ketone (MIBK) and Methyl Isobutyl Carbinol (MIBC)**

- Miscible with most organic solvents
- Medium evaporation range
- Colorless stable organic liquid

**Polysolvan O®**

- Excellent dissolving power for a broad range of polymers
- Miscible with the common organic solvents
- Highly effective flow agent

**Monoethylamine**

- C1 Alkylamine sourced as colorless gas or aqueous liquid
- Reactive intermediate for coatings, extraction chemicals and surfactants

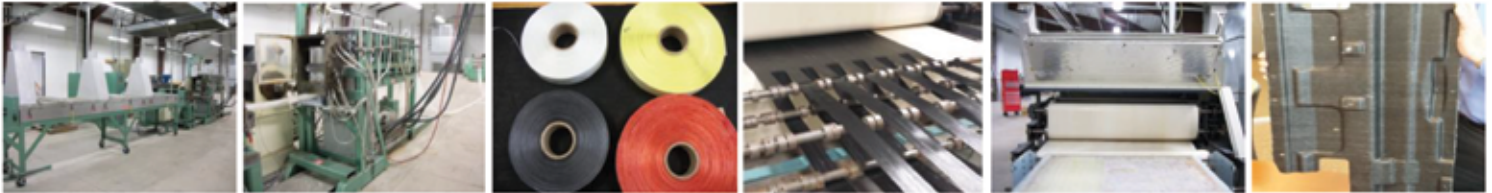


# Sponsors

## GREAT LAKES COMPOSITES INSTITUTE

### Lightweight thermoplastic FRP material and product solutions

The Great Lakes Composites Institute (GLCI) as a subsidiary owned by Bay Mills Community College (BMCC) is focused on the advancement of thermoplastic fiber reinforced materials (TFRP), associated development of new manufacturing processes of TFRP and new product development/implementation as a production supplier. The R&D initiatives at GLCI target the automotive, aerospace, construction, defense and general consumer product industries. GLCI materials and products provide state of the art solutions with significant lightweight benefit, lower cost and optimal physical property performance. GLCI has expanded the patent owned method of Direct Reinforcement Injected Fiber Technology (DRIFT) to a broad range of existing manufacturing processes (e.g. RTM, pultrusion, rollforming, compression/injection molding, vacuum form). The diverse forms of DRIFT materials make this possible. The development of new fibers and resins are the key in addressing global initiatives in energy consumption, environment, cost and achieving higher levels of functional performance. The 22,900 square ft. manufacturing facility is strategically located as a JIT supplier. A dedicated physical test lab (1400 square ft) for material and product performance evaluation is used extensively in QC/QA and validation to our customers. Our facility provides DRIFT materials on three lines producing tape, pellet, rod, plasticized and chopped TFRP which can be either distributed to customers as a raw material supply or further internally supplied via final product manufacturing capabilities in lamination and molding @ GLCI or your facility. For further information please contact Dr. Christopher Griffen (email:cgriffen@bmcc.edu), Ph: 906-630-2403 or Tim Spencer (email:tspencer@bmcc.edu), Ph 906-203-0743 to discuss innovative solutions to your engineering/product applications.



Molding Products  
574.234.1105

Supplying World Class  
Custom Sheet Molding  
Compounds Since 1978!

info@molding-products.com  
www.molding-products.com



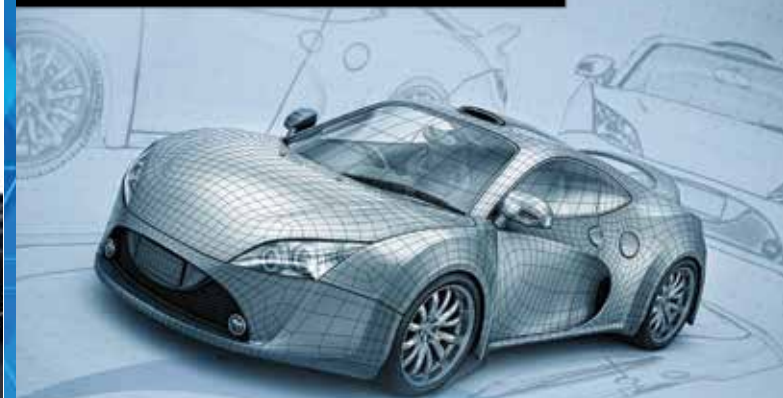
One Stop Source for all  
your Material Needs!

Selection. Service.  
Location.

800.434.8830 | 651.766.6892  
info@nacomposites.com  
www.nacomposites.com



## ADMER™ Coupling Agent



A Better Solution for  
Carbon Fiber PP Composites  
For Lower Part Weights and  
Higher Performance



MITSUI CHEMICALS AMERICA, INC.  
800 Westchester Ave., Suite 5306, Rye Brook, NY 10573  
1-800-682-2377 • www.mitsuicheicals.com

Discuss CFR-PP  
possibilities with  
us at booth 207



# Become a SAMPE Member

## So many reasons to join

### Who We Are

The Society for the Advancement of Material and Process Engineering (SAMPE®) is a global professional member society, provides information on new materials and processing technology via conferences, exhibitions, technical forums, publications, and books. As the only technical society encompassing all fields of endeavor in materials and processes, SAMPE provides a unique and valuable forum for scientists, engineers, and academicians.

The premier source of  
technical information for  
the Materials & Processes  
(M&P) community.

### Membership Benefits:

- SAMPE Journal Subscription
- Digital Library - Access Thousands of Technical Papers at your fingertips
- Membership into Local Chapter
- Event Discounts and Special Offers
- Meetings, Seminars, and Literature
- Leadership Opportunities

## SIGN UP TODAY.

Visit us at [www.nasampe.org](http://www.nasampe.org) for more details



### Upcoming SAMPE Events



For a complete list of upcoming SAMPE Events and details visit [www.nasampe.org](http://www.nasampe.org). Current members receive discounted registration rates for SAMPE Events.

# CAMX

THE COMPOSITES AND ADVANCED MATERIALS EXPO

Co-produced by ACMA and SAMPE.

October 26-29, 2015: Conference

October 27-29, 2015: Exhibits

Dallas Convention Center,  
Dallas, TX, USA  
[www.theCAMX.org](http://www.theCAMX.org)



# SAMPE

LONG BEACH 2016

May 23-26, 2016: Conference

May 24-25, 2016: Exhibits

Long Beach Convention Center  
Long Beach, CA, USA  
[www.sampelongbeach.org](http://www.sampelongbeach.org)



### Join the Conversation

what you have to say matters.

[www.facebook.com/SAMPEGlobal](http://www.facebook.com/SAMPEGlobal)

<https://twitter.com/SAMPE>

<http://linkd.in/1wedNSg>

# 橡塑市场先机 尽在指间掌握

Stay Ahead of the Curve in Plastics Market with CPRJ Multimedia Communication Tools

AdsaleCPRJ.com

## 印刷杂志 Prints

《中国塑料橡胶CPRJ》和CPRJ国际版  
China Plastic & Rubber Journal &  
CPRJ International



## 电子报 eNews



网上杂志 eBook  
手机应用 Mobile App

## 研讨会 Conference



## 在线订阅 SUBSCRIPTION

[AdsaleCPRJ.com/Members](http://AdsaleCPRJ.com/Members)

超过**636,772**位专业人士通过CPRJ获取最新市场新闻和技术报导。

More than **636,772** industrial professionals depend on CPRJ for latest market news & product technology.

## 马上注册即享5大权利

## Register as a member to enjoy 5 benefits

1. 每周电子报 eNews Weekly
2. 产品查询 Product enquiry
3. 文章刊登机会 Articles publication
4. 展会论坛参观特惠 Discounts for admission of exhibitions & conferences
5. 读者个性化服务 Customized readers service



关注CPRJ官方微信  
Subscribe "CPRJ" on WeChat

下载“雅式出版”APP  
Download "Adsale PUB" App



ADSALE 雅式

展 | 刊 | 网  
Exhibition | Publication | Online

雅式出版有限公司 Adsale Publishing Limited  
(雅式集团 Adsale Group)

✉ : cprj@adsale.com.hk



# Sponsors



**From Hours per Part to Parts per Hour**

*Lightweight Automotive Solutions*

**The Weight is Over**



**Mass Reduction. Now available in Mass Production.**

Plasan Carbon Composites is the only dedicated Tier 1 Carbon Fiber Component supplier to the automotive industry. We are the leading manufacturer in cost-competitive Carbon Fiber Class A and structural body parts and assemblies.

[www.plasancarbon.com](http://www.plasancarbon.com)

**IF WE** want sustainable transportation, could we look to the sea?

Algae-based bioplastic materials – a dream our software could bring to life.



**3DEXPERIENCE**  
It takes a special kind of compass to understand the present and navigate the future.  
[3DS.COM/TRANSPORTATION](http://3DS.COM/TRANSPORTATION)

**DASSAULT SYSTEMES** | The 3DEXPERIENCE Company

## Innovative solutions

for lightweight design, fuel savings, emission reduction and lighting & surface technologies.

[www.evonik.com/automotive](http://www.evonik.com/automotive)

Evonik. Power to create.



# Best Papers

SPE® ANNOUNCES 2015 ACCE  
BEST PAPER AWARD WINNERS

*Three* authors who received the highest average ratings by conference peer reviewers out of a field of 70 contenders are being honored this morning for excellence in technical writing with a commemorative plaque during opening ceremonies at the 15th-annual **SPE® Automotive Composites Conference & Exhibition** (ACCE). The conference's best paper awards are named for long-time SPE ACCE committee member, session organizer, two-times technical program co-chair, and long-time automotive-composites industry researcher, Dr. Jackie Rehkopf.

**Dr. Christopher Pastore**, *professor of Transdisciplinary Studies* in the Kanbar College of Design, Engineering and Commerce at **Philadelphia University** (Philadelphia, Pa., U.S.A.) took first place in this year's competition; **Amy Langhorst**, *research engineer* in the Plastics Research group of Materials Research & Advanced Engineering at **Ford Motor Co.** (Dearborn, Mich., U.S.A.) took second place, and **Dr. Jacob Anderson**, *senior research & development engineer* at the **PPG Fiber Glass Science and Technology Center** (Shelby, N.C., U.S.A.) placed third in the competition.

Pastore was sole author on a paper entitled *Lightweighting Composites through Selective Fiber Placement*, which will be presented on **September 10 from 2:30-3:00** p.m. in the **Advances in Reinforcements** session at the conference. About the topic, he says, "The underlying idea is to use more expensive carbon fiber reinforcement only where needed through the use of a gradient hybrid material that incorporates glass everywhere else. The goal is a process that allows automation while optimizing weight and cost for a given structural element. Through a combination of theoretical and experimental evaluations, a methodology for evaluating the weight/cost efficiency of chopped fiber composites has been developed and confirmed experimentally."

The author holds both a Ph.D. in Materials Engineering and an M.S. degree in Mathematics from Drexel University as well as a B.A. degree in Mathematics from LaSalle University. His book *Sustainable Composites* was published earlier this year, adding to a list of many publications in the field of composites, sustainability, and textiles.







Langhorst was lead author along with Dr. Alper Kiziltas, Dr. Deborah Mielewski, and Dr. Ellen Lee, all of Ford Motor Co., on a paper entitled *Selective Dispersion and Compatibilizing Effect of Cellulose Filler in Recycled PA 6/PP Blends*, which will be presented on **September 10 from 2:00-2:30 p.m.** in the **Sustainable Composites** session. About her topic, Langhorst notes that “The environmental impact of automobiles can be reduced by using combinations of recycled polymers and natural fiber reinforcements to replace traditionally unfilled, glass-filled, and talc-filled polymeric components. Composites containing recycled polypropylene, recycled polyamide 6 (PA 6, also called nylon 6), and cellulose were produced using a twin-screw extruder and injection molding. The resulting properties were investigated on a microscopic (scanning-electron microscope) and macroscopic (mechanical and thermal properties) scale and will be discussed during the session.”

Before joining the Plastics Research group, Langhorst previously worked with Ford’s Fuel Cell group on the development of novel materials for enhanced hydrogen storage. She also worked on the launch of the 2015 *Ford Edge* crossover utility vehicle (CUV) at the Oakville Assembly Plant in Ontario, Canada. She graduated from the University of Michigan-Ann Arbor with a Bachelor’s degree in Materials Science and Engineering in 2013.

Anderson was lead author along with Dr. Ryan P. Emerson on a paper entitled *Effect of Processing Technique on the Mechanical Performance of Glass Fiber Reinforced Thermoplastics*, which will be presented on **September 10 from 11:30 a.m.-12:00 p.m.** in the **Advances in Thermoplastic Composites** session. Describing his topic, Anderson explained “In the present work, thermoplastic bulk molding compound (BMC) was investigated to determine its mechanical performance relative to granulated long-fiber thermoplastic (GLFT) and continuous fiber-reinforced thermoplastic tape (CFRT). This was achieved by using injection and compression molding to fabricate thermoplastic composite parts from GLFT, CFRT, and BMC. Versus the GLFT specimen, the BMC material was shown to exhibit improvements in flexural and impact performance of 100% and 20%, respectively, results of which will be described during the presentation.”

In his current role, Anderson is a project leader in the Applications Development Group at PPG and focuses on the processing and evaluation of long-fiber-thermoplastic composites.





# Involvement in Interiors?

## SAVE THE DATE!



**DESIGNER KEYNOTES**

**VEHICLE DISPLAYS**

**SUPPLIER EXHIBITS**

**PANEL DISCUSSIONS**

**NETWORKING**

**WARDSAUTO**  
**Interiors**  
**CONFERENCE**  
**MAY 11 / 2016**

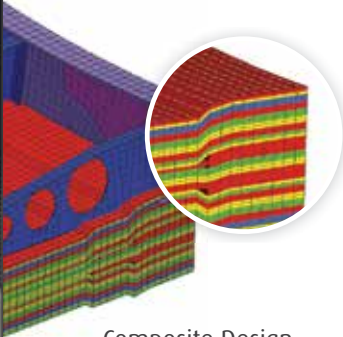
**Reserve your exhibit space or sponsorship now**

[dhurley@wardsauto.com](mailto:dhurley@wardsauto.com) 586-983-4252 [AutoInteriors.com](http://AutoInteriors.com)

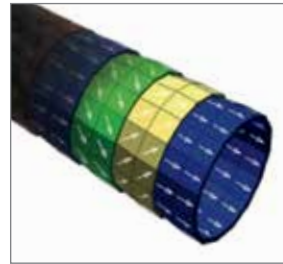


# Sponsors

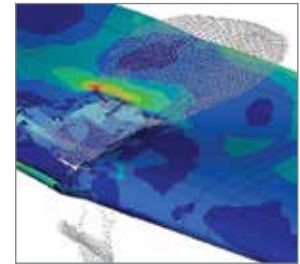
## Your Partner in Composites Design and Analysis



Composite Design



Optimal Lay-up



Impact Analysis

To learn more, visit [altairhyperworks.com/composites](http://altairhyperworks.com/composites)



**AUTOMATED DYNAMICS**  
Performance in Composites  
[www.automateddynamics.com](http://www.automateddynamics.com)



Empowering the world to  
conceptualize, manufacture, and  
implement advanced composite  
solutions

*Automated Dynamics Proprietary*

DELIVERING THE FUTURE  
OF COMPOSITE SOLUTIONS



- PREPREGS FOR PRESS MOULDING
- COSMETIC CARBON PREPREGS
- SURFACE FILMS / SYNTACTIC CORES
- STRUCTURAL EPOXY PREPREGS
- HIGH TEMPERATURE PREPREGS



Gurit provides a range of advanced composite materials for the automotive industry and its suppliers. Our products are designed for a variety of applications, both structural and cosmetic, offering strength and beauty beyond the reach of conventional materials.

Visit us at booth number 410.

For more information on Gurit's full composite offering and expertise: [www.gurit.com](http://www.gurit.com)





# Sponsors

## Lightweight Composites Technology



No Limits for Cannon!



Looking for a reliable and affordable production line for Lightweight Composites?

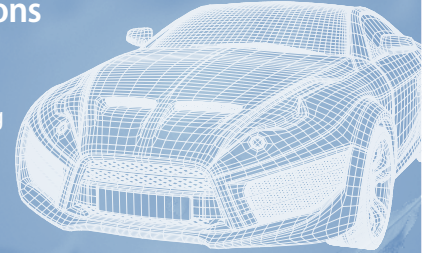
- Preformers for carbon and glass fiber mats.
- Impregnation equipment for urethane and epoxy resins
- Polymerization molds and presses with control of parallelism
- Solutions for the industrial use of recycled carbon fibers
- Robotized handling and trimming equipment
- Production planning and quality control programs
- Worldwide technical service centers.

Ask Cannon for a complete package of technologies.

Cannon USA  
1235 Freedom Road  
Cranberry Twp. - PA 16066 - U.S.A.  
Phone: (724) 772-5600 - Fax: (724) 776-1070  
[www.cannonusa.com](http://www.cannonusa.com)



## Light Weight, Heavy Impact Composite Solutions



At Ashland, we believe our customers are looking for more than just exceptional products. Our customers need solutions.

From deck lids to body panels, heat shields to truck beds, Ashland's advanced composites can deliver lightweight solutions for the transportation industry.

For more information on how Ashland can help, visit Booth P1 or our web site at [ashland.com/transportation](http://ashland.com/transportation).

\* Registered trademark, Ashland or its subsidiaries, registered in various countries  
† Trademark, Ashland or its subsidiaries, registered in various countries  
© 2015, Ashland  
AD-13283

**ASHLAND**

## Release agents for your process

Quality you can see



[www.acmos.com](http://www.acmos.com)

## ENGEL automotive competence is standard



The automobile industry is shaping up for the future with intelligent technology. ENGEL will join your company on this journey: with competence, experience and visionary solutions for injection molding. Your plastic components have wide-ranging requirements; to be safe, functional, lightweight and attractive. We at ENGEL will work with you, side by side, allowing you to take your innovations to production even faster. For example, with our center for lightweight composite technologies, ENGEL optimizes new thermoplastic and reactive processes for your pioneering lightweight construction components.

For more information on ENGEL automotive visit us at the show.

ENGEL automotive

**ENGEL**  
be the first.

ENGEL Machinery Inc. | 3740 Board Road  
York | PA 17406 | phone 717 784 6818  
[sales.us@engelglobal.com](mailto:sales.us@engelglobal.com) | [www.engelglobal.com](http://www.engelglobal.com)



# Sponsors



World's Leading Automotive Composites Forum  
SOCIETY OF PLASTICS ENGINEERS  
AUTOMOTIVE & COMPOSITES DIVISIONS

## Get The Skills You Need To Succeed With Carbon Fiber Gain the Abaris Advantage



TRAINING IN: ENGINEERING, MANUFACTURING, REPAIR  
DIRECT SERVICES: ENGINEERING, ONSITE TRAINING, CONSULTATION



[www.abaris.com](http://www.abaris.com) +1(775) 827-6568



## HP-RTM

>> Large volume production of fibre-reinforced structural components



Hennecke's high-pressure RTM process offers users a new engineering variant as well as an appropriate processing system for manufacturing extremely lightweight high-performance parts.

[jonathan.tidd@us.hennecke.com](mailto:jonathan.tidd@us.hennecke.com)

[www.hennecke.com](http://www.hennecke.com)

# INCREASING THE AFFORDABILITY OF CFRP FOR MASS PRODUCTION

## CYTEC OFFERS

- Rapid cure thermoset prepreg systems
- High-pressure resin-transfer molding resins
- Automation manufacturing technologies
- Large tow carbon fiber developments
- Partnerships with prominent engineering firms

To find out more, come and meet us at  
**SPE Automotive Composites** on **Booth P16**

Visit [www.cytec.com](http://www.cytec.com) Or email [industrialmaterials@cytec.com](mailto:industrialmaterials@cytec.com)

**CYTEC** | Delivering Technology Beyond  
Our Customers' Imagination®

[CYTEC.COM](http://CYTEC.COM)





# Rely on the Fluid Handling Experts for Advanced Composites



HOT RESIN PROCESSING

## Solutions That Build Your Bottom Line

- Simplify your factory floor
- Low capital investment
- Ease of maintenance
- Leverage operator and maintenance know-how throughout your factory
- Build confidence with known Graco reliability



METER MIX DISPENSING



To learn more, call Graco at 1.800.663.6522 or email [fluidmgmt@graco.com](mailto:fluidmgmt@graco.com)



# Sponsors

## Accurate. Fast. Data.

These words haven't always played nice. Today they do.

Our thread design data is ready for download. Let's design some screw bosses together.

<http://bit.ly/1AZpkb0>



**ASAHI KASEI PLASTICS**  
Advanced Material Solutions



**Since 1898**, Chomarar has constantly been reinventing itself. Thanks to its unmatched technological know-how and strategic partnerships, the Chomarar Group today is an international driving force in textile innovation. Present in multiple markets and on four continents, the Group takes advantage of the synergies between its activities in Composites, Textiles and Fashion.

**Chomarar, your innovation partner.**

**CHOMARAT**  
Our world is textile

[www.chomarar.com](http://www.chomarar.com)

**KRÜSS**

Advancing your Surface Science

WHO CAN MEASURE SURFACE FREE ENERGY WITH ONLY ONE CLICK IN LESS THAN A SECOND? WE CAN. AT KRÜSS.



Visit us at  
booth 404

KRÜSS USA | 1020 Crews Road, Suite K | Matthews, NC 28105 | [krussusa.com](http://krussusa.com)

The Future Looks *Light*



November 11, 2015

Don't Miss the Year's  
*Most Innovative Use of Automotive Plastics*  
at the 45<sup>th</sup>-Annual SPE Automotive Innovation Awards Gala

Tickets/Tables are *Going Fast*.  
Make sure you have a place at this year's event  
by registering at <http://speiagregistration.com/>



# Sponsors

**FABRICS**  
by A&P Technology

**\*QISO™**  
Brand Braided Triaxial Fabric

0°, +/-60° single layer balanced lamina. QISO™ has equal amounts of material by weight in every direction providing equal properties regardless of ply orientation.

**Bimax™**  
Brand Braided Bias Fabric


Bimax™ biaxial fabric offers a +/-45° fiber orientation without cutting, stitching or manipulation.

**ZERO™**  
Lightweight Reinforcement

ZERO™ is a non-woven unidirectional fabric with virtually no crimp in the reinforcement fibers. ZERO™ is highly efficient and very affordable. ZERO™ is also offered in a heavy duty form - Quilted ZERO™. Quilted ZERO™ provides a higher areal weight for building thickness and withstands tough handling.

**A & P Technology**  
4585 East 8th Street  
Cleveland, Ohio 44128  
913-688-5200  
sales@rtmco.com  
www.rtmco.com

**WEBER** Precision Tooling for the  
Composites Industry



**Steel  
Invar  
NVD Nickel**

**Weber Manufacturing Technologies Inc**  
Tel 705.526.7896 • Midland, ON  
www.webermfg.ca

# Turn-Key. Solutions for Light Weight Prototyping *and* Short Run Productions.

**Process**  
*Design. Development. Optimization.*

RTM  
LRTM  
HP-RTM  
VARTM  
RSB



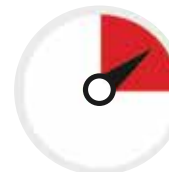
## Design

Maximize product design with the ideal process - RTM, LRTM, VARTM, RSB, HP-RTM - enabling you to meet or exceed light weight production requirement!



## Develop

Develop a practical and proven process for creating production quality parts day-in and day-out!



## Optimize

Optimize your production to the next level with 30 years of hands-on experience within the composites industry!



**BOOTH P-5**

☎ 810 629 6515

📍 Fenton, Michigan, 48430

🌐 www.rtmcomposites.com

Sponsored by

PURE MICHIGAN®

Michigan Economic Development Corporation

# Scholarship Awards

## Winners of SPE® ACCE Scholarships Sponsored by Michigan Economic Development Corp. Announced

THE *SPE ACCE Scholarship Awards* — sponsored by the Michigan Economic Development Corp. for the 2015-2016 academic year — have been won by **Márton Kardos** of *The University of Applied Sciences Hof* (Upper Franconia, Bavaria, Germany); **Christopher Boise** of *Baylor University* (Waco, Texas, U.S.A.); and **Nicholas Kamar** of *Michigan State University* (East Lansing, Mich., U.S.A.). The winning students submitted composites-intensive research projects that were judged to have the greatest potential impact on ground transportation by a panel of industry experts. Each student will return to present the results of his research at next year's SPE ACCE show, September 7-9, 2016.

**Márton Kardos**, won his SPE ACCE graduate scholarship with the topic: *Material Characterization and Draping Simulation of Thermoplastic Prepregs: The Influence of Temperature*. About his project and its potential impact on the automotive composites industry, Kardos says, "In order for composites to become practical and cost-effective enough to be used on high-volume automotive platforms (with production volumes of 200,000 or more units per year), molding cycles must be at or below 60 seconds. To meet such short manufacturing cycle times, continuous-fiber-reinforced thermoplastic composites have enormous potential. However, automotive engineers aren't as familiar with composites, and especially with fabric-reinforced thermoplastic composites, as they are traditional steel and aluminum. To reduce the time and cost associated with the trial-and-error (make-and-break) method of product development, it's vital to use computer simulation. However, to increase simulation accuracy, more studies are needed to investigate the influence of material properties on model parameters in order to close the gap between measured and predicted results. When forming a thermoplastic prepreg, it first must be heated above the matrix resin's melting temperature so the material is 'drapable' before it can be formed into a three-dimensional part. Cooling that occurs as the prepreg is moved from the preheating oven to the mold, and further cooling that occurs upon contact with the cool mold surface causes a change in the final part's mechanical properties. In order to improve the accuracy of draping simulation — which already allows for virtual prototyping of textile feedstock and thus can help reduce or eliminate the costly and time-consuming process of producing parts and physically testing them — it's important to be able to account for the temperature dependency of mechanical properties. The 2015 version of PAM-FORM software [ESI Group, Paris] allows this dependency to be modeled. However, determining bending, shear, and tensile properties at multiple temperatures can be quite laborious. Therefore, the goal of my project will be to see whether dynamic mechanical analysis

(DMA) results can be used to determine both the temperature-dependent properties as well as the viscoelastic behavior of a fabric-reinforced thermoplastic composites."

Kardos earned his Bachelor of Science degree at the Budapest University of Technology and Economics (Budapest, Hungary) in Mechanical Engineering with a specialization in Polymer Technology, and wrote his bachelor's thesis on the topic of "Development of Self-healing Composite Structures Reinforced with Hollow Glass Fibers." He then moved to Germany to pursue a composites-oriented path of study and is currently finishing his Master's degree at the University of Applied Sciences Hof in Composite Materials. While working on his Master's thesis, Kardos gained valuable experience in the field of thermoplastic composites by working in the Materials and Processes department at Volkswagen Group Research (Wolfsburg, Germany) on the topic of "Material Characterization and Draping Simulation of Thermoplastic Prepregs," as well as co-authoring an identically titled paper that he will co-present at the 2015 SPE ACCE. Kardos notes that he is an ambitious young engineer and upon graduation he looks forward to contributing to the dissemination of fiber-reinforced plastics in the automotive industry.





**Christopher Boise** won his SPE ACCE scholarship with the topic: *Investigation of Anisotropic Stiffness and CTE of Woven Composite Laminae Using Finite Elements*. About his project and its potential impact on the automotive composites industry, Boise notes, "Fabric-reinforced composites are often chosen for their favorable strength-to-weight ratio. Because of the heterogeneous nature of these composites, however, it becomes more difficult to predict how these materials will react to certain loading conditions — both mechanical and thermal. This is due to the fact that woven composites are orthotropic at best, react to loading in a viscoelastic (time-dependent) manner, and contain components with differing CTEs [coefficients of thermal expansion]. Further, in the composites industry today, there is virtually an infinite combination of fibers, matrices, and weaves which all have an effect on the thermo-mechanical properties of the resulting composite. A general method is required that — when given any combination of fiber, matrix, and weave — will accurately and quickly predict the resulting thermo-mechanical properties; this will allow for more efficient and effective automotive structural design. The primary objective of my proposed research is to construct the effective anisotropic stiffness and coefficient of thermal expansion tensors for woven composite lamina through the finite-element method (FEM) with a novel material-independent mesh. The resulting predicted tensors will be validated using in-house experimental measurements. After that measured results will be used to compare the effectiveness of existing micromechanical theories. Viscoelastic matrix studies also will be performed to identify appropriate bounds on the linear-elastic matrix assumption inherent in most micromechanical theories. Although many analytic models predicting anisotropic stiffness have been proposed based on the concept of representative volume elements

(RVEs), they may make assumptions that oversimplify the model and thus predict properties that are not accurate for the composite. Many existing methods based on FEM have been developed, but these methods also may have issues replicating the RVE of a woven composite due to its complex geometry — especially for more complex weaves such as satin and twill types. These issues are becoming more important to the automotive industry as the design of structural components in vehicles transition away from traditional isotropic materials like aluminum and steel and towards more anisotropic composite materials in order to produce lighter, more energy-efficient vehicles."



Boise graduated *magna cum laude* from Baylor University in May 2014 with a Bachelor's of Science degree in Mechanical Engineering and a minor in Mathematics. He is currently one year into his master's studies in Mechanical Engineering at Baylor where he has been studying property predictions of woven-fabric composite materials using analytic and finite-element methods. Upon graduating, he hopes to bring this research into the aerospace and automotive industries, where composite materials are becoming more common, in order to design safer, more energy-efficient transportation.

**Nicholas T. Kamar** won his SPE ACCE scholarship with the topic: *Toughening Fiber Reinforced Epoxy Polymer Composites with Graphene Nanoplatelets and Block Copolymers*. About his project and its potential impact on the automotive composites industry, Kamar says, "Glass and carbon fiber-reinforced epoxy composites have high strength/weight ratios and can lightweight ground and air vehicles to improve fuel efficiency while maintaining safety standards. Although fiber-reinforced plastics (FRPs) are strong and stiff, their chemically cross-linked epoxy matrices are brittle and have a low resistance to crack initiation and propagation. In automotive crashes or bird-impact events in jet engines, a structural composite component must have some energy-dissipative mechanisms to prevent catastrophic failure of the composite. Hence, considerable research over the last 30 years has been done to increase FRP fracture toughness. However, current methods employed to increase FRP toughness often negatively impact composite strength and stiffness. Due to their outstanding thermal, electrical, and mechanical properties, carbon-based nanomaterials have shown considerable promise as additives to epoxy polymers and FRPs to improve composite mechanical properties and fracture toughness. Therefore, we will investigate graphene nanoplatelets (GnPs) as additives to FRPs. Another aspect of the project involves use of a nanostructured thermoset as matrix material in FRPs. In epoxy resin, the triblock copolymer (pol)styrene-block-(poly)butadiene-block-(poly) methylmethacrylate (SBM) can self-assemble by attractive and repulsive forces between polymer chains to form rubbery adducts and interpenetrating networks with domains on the nanoscale. This work will advance knowledge of toughening mechanisms in FRPs for automotive and aerospace applications. Nanoscale self-assembly and carbonaceous nanomaterial additives may provide finer control of the nano and micro scales in FRPs, which will allow for large increases in impact toughness and resistance to crack propagation while maintaining composite strength and stiffness for lighter and safer ground and air vehicles."

Kamar earned a B.S. degree in Chemistry from Grand Valley State University in 2011. He currently is a third-year doctoral student at Michigan State University (MSU) where he works as a graduate research assistant at both MSU's Composite Vehicle Research Center (CVRC) and its Composite Materials and Structures Center (CMSC). His research is focused on toughening fiber-reinforced epoxy composites with graphene nanoplatelets and block copolymers. To date he has one journal publication titled "Interlaminar reinforcement of glass fiber/epoxy composites with graphene nanoplatelets." During the summer of 2015, Kamar interned at General Electric Aviation (GEA) in Cincinnati, Ohio, U.S.A., where he worked as a materials applications engineer in the Materials Production and Engineering Department. His work for GEA included failure analysis of bird-impact-tested fan blades for the new GE9x turbine engine, as well as investigation of novel manufacturing methods toward increasing GE9x fan-blade efficiency. After completing his Ph.D., Kamar hopes to continue working on composite materials in the aerospace industry.



WHAT HAPPENS WHEN

# AUTO

meets **autopilot**



**Michigan leads in autonomous driving technologies.**

Distracted driving is a global problem. But solutions are being invented right here in Michigan. Sonar, radar, infrared cameras, even car-to-car wireless communication are all being developed by a diverse range of companies, entrepreneurs and engineers to bring the day of auto-piloted cars closer and closer. Drawn by a large talent pool, a dynamic automotive infrastructure and state support, companies have found that futuristic thinking is automatic in Pure Michigan.

1.888.565.0052  
[michiganbusiness.org/ACCE](http://michiganbusiness.org/ACCE)

PURE *M*ICHIGAN®



# Sponsors



World's Leading Automotive Composites Forum  
SOCIETY OF PLASTICS ENGINEERS  
AUTOMOTIVE & COMPOSITES DIVISIONS



## Your Local Advantage: Composite Innovation

Huntsman understands supplying composite solutions to the global automotive market takes more than just delivering products. It takes innovation, passion and determination, backed by an experienced R&D team. At Huntsman, we gain a deep understanding of our customers needs, build lasting relationships and deliver real solutions.

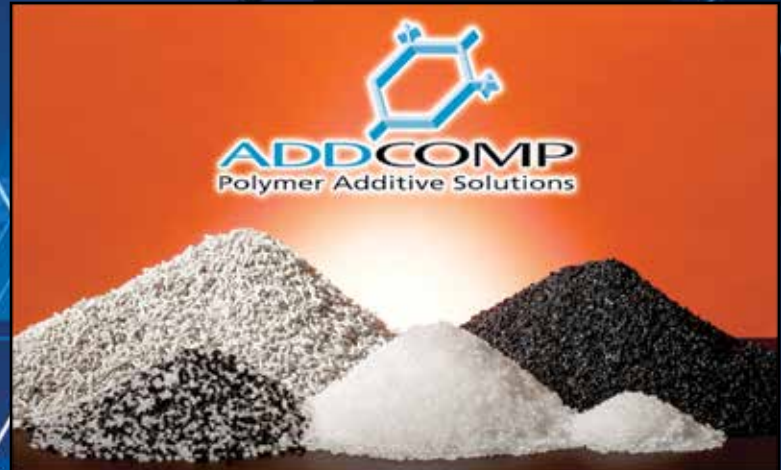
Our composite experts based in Auburn Hills, Michigan, know thermoset resins, adhesives and tooling materials. More importantly, Huntsman knows how to work with *your* company to create innovative lightweight, high-strength structural components made with glass, carbon and cardboard core reinforcements using pultrusion, resin-transfer molding (RTM), filament winding, long-fiber injection (LFI), spray and infusion manufacturing methods.

It's what we at Huntsman like to call...  
*Your Local Advantage.*

### HUNTSMAN

Enriching lives through innovation

[www.huntsman.com/polyurethanes](http://www.huntsman.com/polyurethanes)



Addcomp is a global developer and provider of one-pack additive solutions and production services for manufacturers, compounders, and converters of thermoplastic resins.

The company's products can improve production processes, lower life-cycle costs, and enhance material or end-product performance.

Addcomp North America delivers support for customers throughout the US, Canada, and Mexico. The company supplies a range of additive solutions, including flow improvers, coupling agents, anti-blocking, UV stabilization, flame retardancy, heat stabilization, moisture control, and static resistance.



ISO/TS 16949 : 2009 certified

2932 Waterview Drive • Rochester Hills, MI 48309  
248-598-5205 • [www.addcompnorthamerica.com](http://www.addcompnorthamerica.com)



## CORIOLIS composites

FIBER PLACEMENT ROBOT  
FOR THERMOPLASTIC, THERMOSET & DRY FIBER

COMPOSITE SIMULATION SOFTWARE

AEROSPACE AND AUTOMOTIVE MARKET

Successful industrial and collaborative projects  
*Bombardier, Airbus, Dassault, Safran, Audi, Cooper, Faurecia*

[www.coriolis-composites.com](http://www.coriolis-composites.com)



# SEEING POLYMERS WITH DIFFERENT EYES...

Impact of shale gas and bio-chemistry  
Shape memory foam  
Energy flexible LEDs  
3D/2D printing

**TPE**  
Thermoplastic Elastomers  
magazine  
international

**HEXPOL TPE**

**It's not just what we make  
It's what we make possible**

Our teams across the globe are constantly developing new polymer combinations, helping create customised TPE materials that are lighter, tougher, more durable, more sustainable. We help our customers do what they do better - and do things they simply couldn't do before.

info@hexpolTPE.com • www.hexpolTPE.com

Volume 7, June 2015  
2 | 2015

**GAK Gummi FASERN Kunststoffe**  
Fachmagazin für die Polymerindustrie

Kautschukextrusion  
Fließpolymerfilme  
Sulfenamide und Netzwerkstruktur  
PVC mit Bioweichmachern  
Flammenschutzbeschichtung

50 YEARS OF CELEBRATING LOCAL PRODUCTION

DESMA

24/7  
Best experts in rubber and plastic  
industrial machinery

Special Solutions for Global Success

**DIE NEUE BENCHMARK S3**  
SO SIEHT DIE ENERGIE- UND MATERIALEFFIZIENTE PRODUKTION DER ZUKUNFT AUS

www.desma.de

68. Jahrgang, Juli 2015  
07 | 2015

**RFP Rubber FIBRES Plastics International**  
Magazine for the Polymer Industry

NR filled with CNTs and carbon black  
Improved AEM polymers  
Cure time reduction  
ETU replacement accelerator  
Fatigue life prediction

**THE ART OF PRODUCTION EFFICIENCY**

www.arburg.com

**ARBURG**

Volume 18, May 2015  
02 | 2015

**magazin**  
PU MAGAZIN 03/2015 Juli

**FORUM FÜR DIE POLYURETHANINDUSTRIE**

Produktion von Isocyanaten  
 Umweltschonende Triisocyanat  
 Schutzbeschichtungen für Böden  
 Metallbasierte PU-Katalysatoren  
 Transparenz PU-Formelherstellung

Seit Jahrzehnten top  
Hochdruck-Mischköpfe von KraussMaffei

Engineering Passion. KraussMaffei

www.pu-magazin.de

Contact us to learn more about subscriptions, advertising opportunities, editorial specials ...

info@gupta-verlag.de



**magazine**  
03/2015 JUNE/JULY

*Good news for your business*

Foam expansion agents  
 Three stream direct injection of blowing agents  
 Non-halogenated FR in FR boardstock  
 Discontinuous panel production  
 Rigid foam with NDCs

**cheers**

**Honeywell**

www.puimagazine.com

**Our technical magazines and books create your expertise**

P. O. Box 101330 · 40833 Ratingen/Germany · www.gupta-verlag.com  
Tel. +49 2102 9345-0 · Fax +49 2102 9345-20



# Sponsors

Leaders in **thermoset** and  
**thermoplastic** composites  
for the transportation industry.



Alfa Romeo 4C Chassis

**SPE® ACCE**  
Visit us at  
**Booth #220**

Tel: 805.482.1722 Fax: 805.482.8776

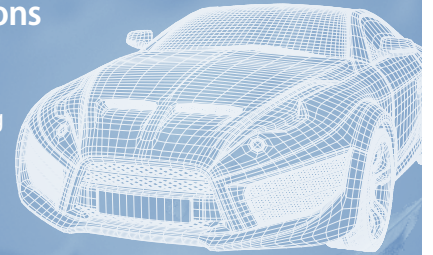
[www.tencateadvancedcomposites.com](http://www.tencateadvancedcomposites.com)  
[www.tencateindustrialcomposites.com](http://www.tencateindustrialcomposites.com)

E-mail: [info@tcac-usa.com](mailto:info@tcac-usa.com)

**TENCATE**  
materials that make a difference

## Light Weight, Heavy Impact Composite Solutions

At Ashland, we believe  
our customers are looking  
for more than just  
exceptional products.  
Our customers need  
solutions.



From deck lids to body panels, heat shields to truck beds,  
Ashland's advanced composites can deliver lightweight  
solutions for the transportation industry.

For more information on how Ashland can help, visit Booth P1  
or our web site at [ashland.com/transportation](http://ashland.com/transportation).

\* Registered trademark, Ashland or its subsidiaries, registered in various countries  
™ Trademark, Ashland or its subsidiaries, registered in various countries  
© 2015, Ashland  
AD-13283

**ASHLAND**

## FINDING THE BEST PROCESS ISN'T A PROCESS AT ALL

With creative solutions and a wide range of processes, Core  
Molding Technologies makes finding the best process for your  
specific application easy, while saving you time and money.

- D-LFT
- Resin Transfer Molding
- SMC
- Reaction Injection Molding
- GMT
- Compression Molding



CREATIVE • RELIABLE • COMPOSITES

Learn more at [www.coremt.com](http://www.coremt.com)



VISIT US AT  
BOOTH #P-2!



# Sponsors

## Where Tomorrow Takes Shape.



### WesTool is your one source for:

- ▶ New mold design and build
- ▶ Engineering changes, mold repairs and complete restorations
- ▶ A comprehensive range of mold building and repair solutions
  - Compression
  - Injection
  - Reaction injection (RIM)
  - Resin transfer (RTM)
  - And others
- ▶ The highest standards of precision, quality and service



Where tomorrow takes shape.

Learn more at [www.westools.com](http://www.westools.com) today.

7383 Sulier Drive  
Temperance, MI 48182  
734.847.2520

MOLDS, TOOLING & MACHINING



### LIGHTWEIGHT DESIGN ENERGIZED BY LANXESS

LANXESS delivers efficient lightweight solutions for the next generation of vehicles. Our high-performance **Durethan**® polyamides, **Pocan**® PBTs, and **Tepex**® composite sheet technologies lower production costs and optimize energy consumption—resulting in an average 3 – 4 percent savings in fuel consumption and a decrease in emissions. Find out more about our lightweight innovations and further contributions to the future of GREEN MOBILITY™. [www.green-mobility.com](http://www.green-mobility.com)

X **Durethan**® X **Pocan**® X **Tepex**®

Durethan®, Pocan® and Tepex® are registered trademarks of LANXESS Deutschland GmbH

## LOW DENSITY SMC



- **Lightweight**  
(Comparable to Aluminum)
- **Class "A" Surface**
- **Excellent Impact Resistance**
- **Improved Fuel Efficiency**
- **Fits Existing Assembly Processes**



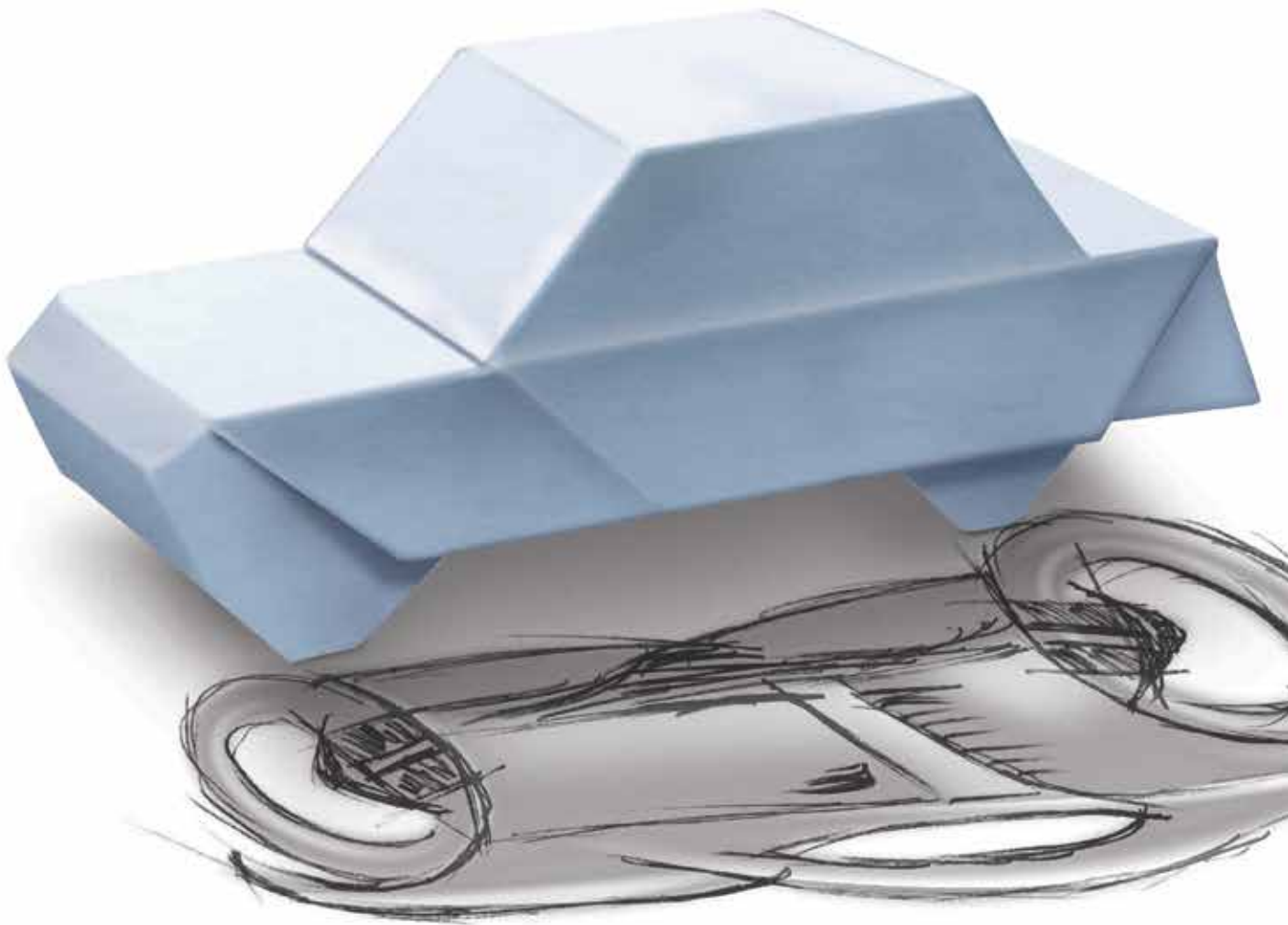
[AOC-Resins.com](http://AOC-Resins.com)

@AOCresins



World Leader in Resin Technology





## Enabling Technologies for Lightweighting and Greenability

- Improve fiber wetting
- VOC and odor stripping
- Scratch and mar resistance
- Optimize throughput
- Reduce scrap and void content
- Organoclays
- Solid phase grafted coupling agents
- Enhance FR properties

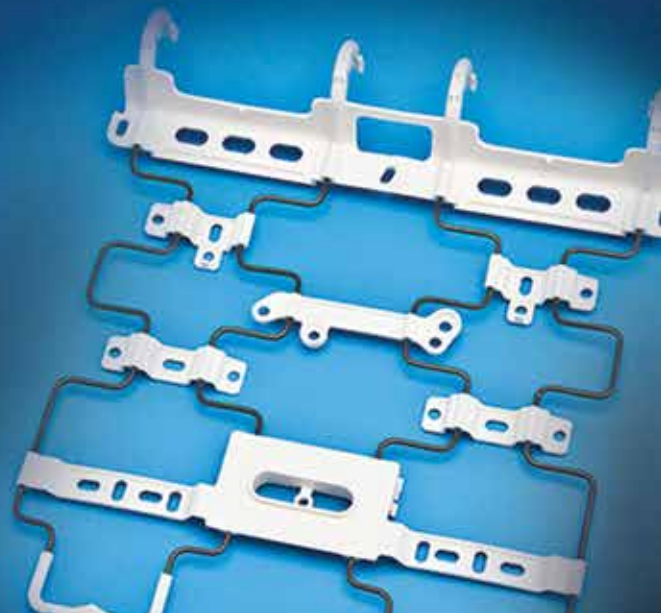
More information:  
[www.byk.com](http://www.byk.com)



# THE MOLDING BLOG

[www.themoldingblog.com](http://www.themoldingblog.com)

The Molding Blog is a news site focusing on advanced plastics technologies.





# Lifetime



# Achievement

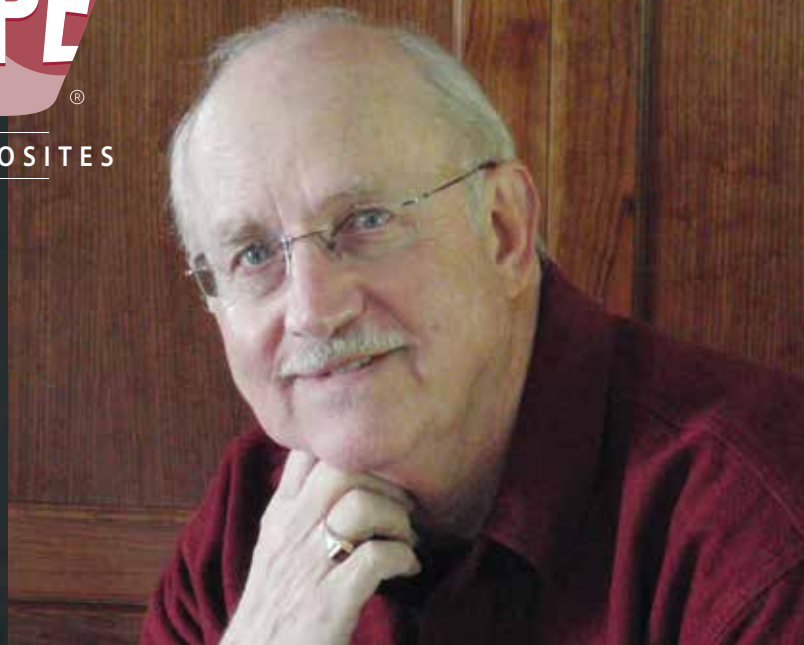
## American GFM's Dan Buckley Wins 2015 SPE® Composites Division's Lifetime Achievement Award

Dan Buckley has won the SPE Composites Division's **Lifetime Achievement Award** for service to the division, to SPE, and to the larger global composites industry. Buckley, who was a founder of the SPE Composites Division and a co-founder of the SPE ACCE show, has enjoyed a career spanning five decades that includes nearly 20 issued patents, over 100 presentations at industry gatherings, and four book contributions. He is retiring from the SPE Composites Division board as well as his current employer, American GFM Corp. in 2016.

Upon graduating from University of Massachusetts-Amherst with a degree in Chemistry, Buckley began his long career in plastics by working in the quality-control laboratory of phenolic molding-compound manufacturer, Duraphene Industries Inc. in Sterling, Conn. After less than a year, the company closed and Buckley moved on to Reichold Chemical's Chicago office where he became a sales engineer supporting phenolic molding compounds, eventually adding the composites side of the business. Next he joined GLS Fiberglass for three years as manager of the company's Milwaukee, Wis. branch, and then Buckley joined C.A. Lawton Co. as sale manager in the company's Green Bay, Wis. office for four years. In 1979, Buckley left Lawton to form his own company, Vermont Industrial Plastics and moved his family back to New England to be closer to ailing parents. The company grew and was sold in 1986, at which point Buckley returned to C.A. Lawton as director of Product Development and R&D, bringing his career full circle and returning to research. During this period, he licensed some of his patents to American GFM (AGFM) and, as part of the deal, for the next 15 years split his time between both companies. In 2005 he left Lawton and joined AGFM full time as R&D manager.

Since 1986, Buckley has filed and been awarded numerous patents related to composites. His patent portfolio over the years has included composition of matter patents for binders and thermoset polymers (including epoxies, polyurethanes, unsaturated polyesters, vinyl esters, and phenolics), and process patents involving curing energies and 3D wave guide/imaging management. He also holds a design patent for a medical device.

Buckley, who is an *Emeritus* and Honored Service member of SPE joined the society when he worked for Reichold. During his first stint with C.A. Lawton, Buckley became a member of the board of directors of the SPE Thermoset Division. During his tenure on that board, he served as treasurer, ANTEC® vice chair, ANTEC chair (twice), chair-elect



and division chair, as well as division councilor for a total of nine years. It was during his time on the SPE Thermoset Division that Buckley started a committee that eventually became the SPE Composites Division. He joined the board of the newly formed Composites Division and was the division's first councilor for six years. He also served as chair-elect and division chair. He helped guide the new division through startup and financial challenges, as well as worked with other engineering societies on several composites-related technical conferences. In the fall of 2000 it became obvious that a partner organization was uninterested in supporting the conference further, so Buckley approached Fred Deans from the SPE Automotive Division board and suggested that both boards work together to form a new event, which was held the following year in 2001 and became known as the SPE Automotive Composites Conference & Exhibition, which is now in its fifteenth successive year. Two other innovations introduced by Buckley that have since been implemented by numerous SPE groups are the electronic newsletter and the news brief concept. Both were the result of budget limitations by the Composites Division, which still needed to communicate with its members. Buckley also was the division's first recipient of its annual Composites Person of the Year award.

According to Dale Grove, SPE Composites Division Awards chair, "Dan Buckley is the SPE Composites Division's longest acting member and has been a driving force for our organization from the very start. For his lifetime of work serving our division, SPE, and this industry, we really wanted to honor him with this Lifetime Achievement award. He's earned it."

In retirement, Buckley plans to continue restoring and showing vintage cars (he currently owns four of them), alpine skiing (he recently retired after 31 years as a ski instructor at Killington Ski Resort), touring the country in his recreational vehicle (RV), and enjoying his three children and three grandchildren (all of whom live nearby). Ever curious, he also plans to stay peripherally involved in a few side projects with friends in the nanocomposites and medical-device fields.

# Sponsors

## LIQUID THERMOPLASTIC RESIN

FIND THE NEXT GENERATION OF PRODUCTS FOR ADVANCED COMPOSITES

- **RTM Injection at ambient temperature**
- **Recyclable composite parts**



[elium-composites.com](http://elium-composites.com)

**ELIUM**  
BY ARKEMA

Elium® is a registered trademark of Arkema.  
© 2015 Arkema Inc. All rights reserved.



BASALT FIBER  
& LONG FIBER  
THERMOPLASTICS



[maficbasalt.com](http://maficbasalt.com)

## NRC-CNRC

Advanced Composites  
and Biocomposites Solutions

- |  |   |
|--|---|
| <b>Development work in:</b>  | <b>Facilities for:</b>  |
| <ul style="list-style-type: none"> <li>• New composite materials</li> <li>• High throughput processes</li> </ul> | <ul style="list-style-type: none"> <li>• Prototyping</li> <li>• Tool testing</li> </ul> |


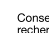


Visit the National Research Council Canada at **Booth 422**

### Contact

**Mathieu Boisclair**  
Tel.: 450-641-5308  
[Mathieu.Boisclair@nrc-nrc.gc.ca](mailto:Mathieu.Boisclair@nrc-nrc.gc.ca)  
[www.nrc-cnrc.gc.ca](http://www.nrc-cnrc.gc.ca)



 National Research Council Canada  Conseil national de recherches Canada

**Canada**

Multi-scale for multi-materials

**Digimat**

Tools, solutions and eXpertise for composite modeling

[www.e-Xstream.com](http://www.e-Xstream.com) | [Info@e-Xstream.com](mailto:Info@e-Xstream.com)



# Sponsors



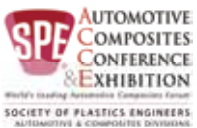
World's Leading Automotive Composites Forum  
 SOCIETY OF PLASTICS ENGINEERS  
 AUTOMOTIVE & COMPOSITES DIVISIONS

## DolphiTech WILL EXHIBIT AT THE **SPE ACCE** EXHIBITION & CONFERENCE



VISIT US AT  
**BOOTH #226**

The NEW **DolphiCam TeamCenter** solution designed for the automotive industry sector, ensures **reliable NDT Inspections** in CFRP Structures.



**DOLPHITECH. ULTRASOUND. SIMPLE**



DISCOVER  
 OUR  
 INNOVATIVE  
 SOLUTIONS AT  
**BOOTH  
 P6**

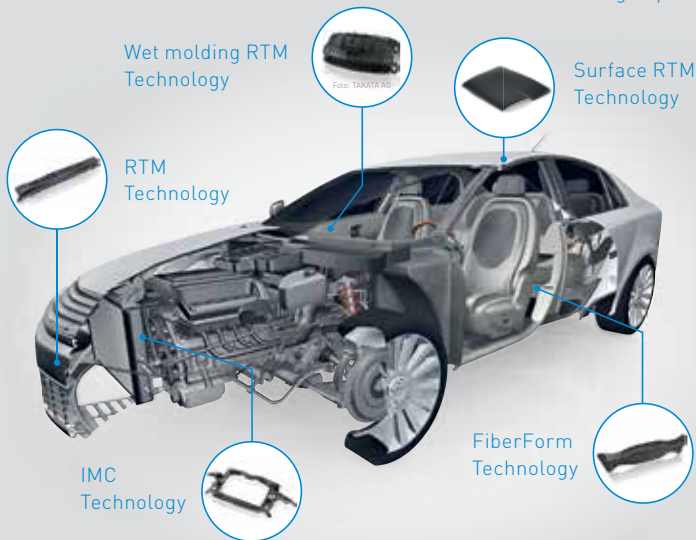
**ADVANTEX® ME1510 ROVING**  
 Redefining Performance in New Epoxy SMC  
 Structural Applications

**PERFORMAX® SE4850  
 SINGLE-END ROVING**  
 Redefining DLFT PP Performance

[composites.owenscorning.com](http://composites.owenscorning.com)

© 2015 Owens Corning. All Rights Reserved. Picture: gettyimages.com

[www.kraussmaffeigroup.us](http://www.kraussmaffeigroup.us)



Fiber composite solutions  
 for advanced lightweight components

Engineering Passion

**KraussMaffei**

[www.lydallpm.com](http://www.lydallpm.com)



Drive  
**ENVIRONMENTAL RESPONSIBILITY**

**Panther™**  
 Recycled Carbon Fiber  
 Felts & Veils

**Lightweight Solutions**

- Automotive Interior/Exterior
- Aerospace
- Boat & Vehicle Surfaces
- EMI Shielding
- Sporting Goods

Partners  
 in Performance

# Meet the Next Generation of Automotive Composites Engineers

## SPE ACCE Attendees Encouraged to Participate in Student Poster Competition Judging Sponsored by Faurecia Automotive Exteriors

The student poster session is an annual event at the ACCE where students from U.S. and international universities present state-of-the-art work related to materials and manufacturing technologies relevant to automotive applications. Over 20 graduate and undergraduate students from 10 universities in the U.S. and Canada are presenting work at the 2015 ACCE. Topics include characterization of fiber lengths / distribution in discontinuous fiber composites, prediction of fiber flow, advances in nano-bio composites, low-cost carbon fiber applications, and metal-composite hybrids. Please join us in welcoming the students and taking a good look at their hard work, which will be on display throughout the conference in Hall C (where lunch is served). This provides the students with an excellent opportunity to meet and talk with members of the automotive composites community and learn what it is like to work as an engineer or scientist in this field. It also provides OEMs and their suppliers with the opportunity to meet the next generation of automotive composites engineers and scientists and potentially to hire them.

Judges made up of media, industry experts, ACCE participants, and SPE board members will review all posters with student authors during the first day of the conference. **Interested conference attendees may participate in the competition by inquiring at the front registration area about how to become a judge.** Students of winning posters judged to be in the Top 3 in graduate and undergraduate categories will receive plaques at a formal recognition ceremony during lunch on the second day of the conference, and all student participants will receive monetary support to help defray travel expenses, courtesy of competition sponsor, **Faurecia Automotive Exteriors**. Faurecia is the world's sixth-largest automotive supplier, with four business groups: Automotive Seating, Emissions Control Technologies, Interior Systems, and Automotive Exteriors. In 2014, the group posted sales of \$25-billion USD and employed 99,500 people in 34 countries at 330 sites and 30 R&D centers around the world.

Explaining why his company sponsored this year's poster competition, Patrick (Pat) Szaroletta, president, Faurecia Automotive Exteriors North America said, "Innovation is part of Faurecia's DNA, so supporting the SPE ACCE student poster competition is a natural way for us to encourage innovative thinking in what essentially is the future of our industry. We're proud to be a part of SPE and to showcase the expertise,

creativity and ingenuity of these future plastics engineers as they bring their fresh perspectives and new ideas to today's challenges."

Students and their posters will be ranked according to the following criteria:

- Content (student and poster demonstrate clarity of topic, objectives, and background);
- Motivation for research and technical relevance to conference theme;
- Methodology and approach to problem;
- Quality of proposed research results/findings;
- Conclusions are supported by information presented;
- Presentation (display aesthetics are pleasing and there is a logical flow between sections);
- Knowledgeable (presenter has a good grasp of the subject);
- Understandability (poster is effective even without student being present to explain it); and
- Overall rank vs. other posters and presenters.

Since 2008, the SPE ACCE poster competition has been organized annually by Dr. Uday Vaidya, SPE Composites Division board member and education chair, as well as professor of Mechanical, Aerospace and Biomedical Engineering, University of Tennessee - Knoxville, University of Tennessee/Oak Ridge National Laboratory Governor's





Chair in Advanced Composites Manufacturing, and chief technology officer with the Institute for Advanced Composites Manufacturing Innovation (IACMI).

Topics, student authors, and schools accepted into this year's competition at press time include the following (names of student presenters are underlined):

## Student Poster Entries

1. *A New Technique to Measure the Fiber Length Distribution of Discontinuous Fiber-Reinforced Plastics:* Sebastian Goris, Tim Osswald, **University of Wisconsin-Madison**;
2. *Direct Particle Simulation to Predict Fiber Motion in Polymer Processing:* Camilo Perez, Daniel Ramirez, Sebastian Goris, Tim Osswald, **University of Wisconsin-Madison**;
3. *Fiber Orientation Measurements Using a Novel Image Processing Algorithm for Micro-Computed Tomography Scans:* Sebastian Goris, Tim Osswald, **University of Wisconsin, Madison**;
4. *Effects of Peroxide and Thermal Treatment on the Properties of Banana Pseudostem Fibers:* Patrick Chester, **Baylor University**;
5. *Novel Electrically Conductive Biobased Hybrid Adhesive from Distillers' Dried Grain with Solubles (DDGS) and Graphene:* Michael Biancanello, Tao Wang, Manjusri Misra, Amar K. Mohanty, **University of Guelph**;
6. *Emerging Materials: Torrefied Soy Biomass in the Production of Thermoplastic Composites:* Ronald Koslakiewicz, Alper Kiziltas, Wonsuk Kim, Alan Argento & Deborah Mielewski, **University of Michigan-Dearborn**;
7. *Green Nanocomposites from Biobased Poly(Trimethylene Terephthalate) and Graphene: Process Engineering and Performance Evaluation:* Geoffrey Beamish, Petri Myllytie, Amar K. Mohanty, Manjusri Misra, **University of Guelph**;
8. *Wet Laid Thermoplastic Carbon Fiber Composites:* Hicham Ghossein, **University of Alabama at Birmingham**;
9. *Hybrid Metal-Composite Laminates:* Pritesh Yeole, **University of Tennessee-Knoxville**;
10. *Woven Fabric Composite Stiffness Property Prediction through Finite Element Modeling of Representative Volume Elements:* Christopher Boise, **Baylor University**;
11. *Investigation of Woven Fiber Reinforced Laminated Composites Using a Through Transmission Ultrasonic Technique:* Sarah Stair, **Baylor University**;
12. *Reversible Bonded Joints using Graphene Modified Thermoplastic Adhesives:* B.J. Ewing, E.G. Koricho, A. Khomenko, M. Haq, and L.T. Drzal, **Michigan State University**;
13. *Hybrid Material, Stiffness Matching Perforated Aluminum-to-Composite Joints:* J. Caudhill, E.G. Koricho, A. Khomenko, and M. Haq, **Michigan State University**;
14. *Novel Hybrid Fastening of Aluminum to Composites Joints:* Kalie Collins, A. Khomenko, E.G. Koricho, G.L. Cloud, and M. Haq, **Michigan State University**;
15. *Self Sensing Characteristics of Carbon Fiber Reinforced Composites using Electrical Resistivity Measurements and Guided Waves:* N.T. Saikiran, D.R. David, O. Karpenko, E.G. Koricho, A. Khomenko, M. Haq, L. Udpa, S. Udpa, P. Rajagopal, and K. Balasubramaniam, **Michigan State University**;
16. *Robust, Rapid Measurements of Interlaminar Crack Growth in Composites:* D.R. David, N.T. Saikiran, N.T. Saikiran, O. Karpenko, E.G. Koricho, A. Khomenko, M. Haq, L. Udpa, S. Udpa, P. Rajagopal, and K. Balasubramaniam, **Michigan State University**;
17. *Fused Deposition Modeling Nozzle Geometry Manipulation for Preferred Fiber Orientation in Printed Parts:* Nate Spinnie, Blake Heller, **Baylor University**;
18. *Non-Isotropic Material Distribution Topology Optimization for Fused Deposition Modeling Products:* Robbie Hagland and Douglas E. Smith, **Baylor University**;
19. *Impact Resistant Composites and Modeling of the Damage Zone within a Laminate:* Colin Gregg, **Baylor University**.

# Sponsors



Right Design | Right Materials | Right Process

## Advanced Engineering Partner for Lightweight Solutions

Carbon fiber  
Glass fiber  
Natural Fiber  
Hybrid

End to end product development  
Low cost, scalable team  
Dedicated focus on composites  
Access to innovative technology

**SEE OUR DISPLAY AT BOOTH 407**

INNOVIUMLLC.COM | SPECTRUS-GROUP.COM  
KGUENTHER@INNOVIUMLLC.COM  
**248.982.7970**



## Complete production plants for composites

- Composite presses with highly precise single-cylinder control
- Injection units for RTM process by Wolfangel
- Handling technology with six axes FEEDERplus by Strothmann

[www.siempelkamp.com](http://www.siempelkamp.com)

## CUSTOM SEAT COVERS

- ✓ MADE TO ORDER
- ✓ VARIETY OF FABRICS
- ✓ SLIP-OVER INSTALL



**SHEAR COMFORT®**  
**1-800-663-7750**

ORDER ONLINE → [WWW.SHEARCOMFORT.COM](http://WWW.SHEARCOMFORT.COM)



composites & plastics

## COMPOSITES MANUFACTURING SIMULATION CHAIN

From parts design to composites structural analysis

**PAM-RTM**  
Composites injection process  
Definition & Optimization

- ✓ Filling time
- ✓ Dry spots
- ✓ Porosities
- ✓ Curing cycle

**PAM-FORM2G**  
Composites forming process  
Definition & Optimization

- ✓ Wrinkles
- ✓ Thicknesses
- ✓ Fiber orientations
- ✓ Optimum flat pattern



Copyright: ESI Group 2012 - G/16/07/35A - Courtesy of ESI Group

[www.esi-group.com/composites](http://www.esi-group.com/composites) | [info@esi-group.com](mailto:info@esi-group.com)



# Sponsors



World's Leading Automotive Composites Forum  
 SOCIETY OF PLASTICS ENGINEERS  
 AUTOMOTIVE & COMPOSITES DIVISIONS

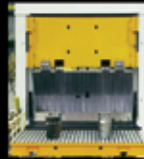


Interested in  
**LIGHTWEIGHT and  
 PERFORMANCE**

**Glass Fibers**  
*Performance for your Convenience*



**Custom  
 Press Systems  
 & Technology**



SUPPLIED TO  
 DAIMLER-CHRYSLER



SUPPLIED TO  
 FORD MOTOR COMPANY



SUPPLIED TO GENERAL MOTORS



Since 1854, Williams, White has engineered and manufactured custom hydraulic press technology for leading automotive companies and Tier 1 suppliers. Utilizing the latest in 3-D modeling and finite element analysis, we will custom design your next press for assured repeatability, continuous production and unprecedented performance.

600 River Drive, Moline, Illinois 61265 • 877.797.7650 • www.williamswhite.com



# Plastics Engineering

See me at the  
**Automotive  
 Composites  
 Conference  
 & Exhibition**

in Detroit, MI  
 September 9-11



## ASK ME ABOUT

- Print Advertising in *Plastics Engineering*
- Web Advertising on *Plastics Engineering*/Wiley Online Library
- Custom E-blasts – sent to ALL active Society of Plastics Engineers members

## ALL WITH LEAD GENERATION METRICS

*Plastics Engineering* Magazine AD BUNDLE

Print • Digital • E-blast Marketing at a Conference Discounted Rate.

## Contact: Roland Espinosa

Senior Account Manager  
 Print & E-Media Advertising  
 201-748-6819 • respinosa@wiley.com





# Sponsors

## Composites Insight

Please visit us at  
Booth # 104!

Composites have a lot to say – understand their thermal properties with solutions from NETZSCH



Differential Scanning Calorimetry (DSC)

# NETZSCH

NETZSCH Instruments North America, LLC · [www.netzsch.com](http://www.netzsch.com)

**T** MuCell Processes  
**TREXEL** INC.

**MuCell**<sup>®</sup>  
Microcellular Foaming  
Technology for Light  
Weighting Automotive  
Plastic Parts



- Reduced Vehicle Weight
- Uniform Part Shrinkage
- Improved Fuel Economy
- Dimensional Consistency

[www.Trexel.com](http://www.Trexel.com)



Sigmatex develops and manufactures carbon fibre textiles for composite material applications, supplying fabrics to a wide range of sectors including Automotive, Aerospace and Sports & Leisure.

Technical solutions include;

- Spread tow fabrics
- 3D fabrics
- Unidirectional fabrics
- Multiaxial fabrics
- Innegra fabrics
- 2D Woven fabrics
- Recycled fabrics



Find out more at  
[www.sigmatex.com](http://www.sigmatex.com)

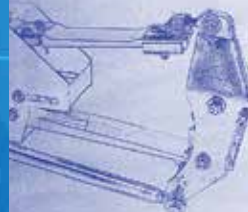
# polystrand

CONTINUOUS FIBER REINFORCED THERMOPLASTICS  
**RETHINKING COMPONENT DESIGN?  
WE ARE YOUR SOLUTION.**

RECYCLABLE • HIGH PERFORMANCE • LIGHTWEIGHT  
HIGH STRENGTH • COST-EFFECTIVE

STRESS CONTOURED AND  
FATIGUE RESISTANT  
SPRINGS

SELECTIVE  
REINFORCEMENT IN  
HIGH STRESS AREAS



STRUCTURAL  
AND FORMABLE  
SANDWICH PANELS

[WWW.POLYSTRAND.COM](http://WWW.POLYSTRAND.COM)



# Sponsors



At the **Fraunhofer Project Centre for Composites Research**, our 2,500t industrial hydraulic press develops technologies that incorporate the strength of aerospace composites and the fast cycle time of automotive components.

Learn more about one of North America's most advanced centres for industrial scale testing, design and research:

Please visit us at **Booth P-11** or online:

[www.eng.uwo.ca/fraunhofer](http://www.eng.uwo.ca/fraunhofer)



**Fraunhofer**

*\*Proud Premiere Show Sponsors*

**DSC CONSUMABLES**  
i n c o r p o r a t e d

High quality lab ready dsc sample pans

[www.dscconsumables.com](http://www.dscconsumables.com)

## Innovative solutions

for lightweight design,  
fuel savings, emission  
reduction and lighting  
& surface technologies.

[www.evonik.com/automotive](http://www.evonik.com/automotive)

Evonik. Power to create.





# Sponsors



## Lightweighting Your World

**SMC | CFRP | LFT | Hybrid**  
Process technology and automated systems  
for manufacturing fiber-reinforced components

**DIEFFENBACHER**

[www.dieffenbacher.com](http://www.dieffenbacher.com)

## Tenax® CARBON FIBERS REINFORCING EXCELLENCE

Toho Tenax America, Inc. is your Americas source for Tenax® brand carbon fibers for diverse end-use applications including:

**Wind Energy • Offshore Oil • Pressure Vessels  
Surface Transportation • Aerospace**

**POWER** for you

**MOVING** you



**TohoTenax**  
Toho Tenax America, Inc.

**TEIJIN**  
Human Chemistry, Human Solutions

1 (800) 252-3001 • [www.TohoTenaxAmerica.com](http://www.TohoTenaxAmerica.com)

## **IDI** Composites® International

**Ideas For Meaningful Results.**

Visit Us In Booth 206



[idicomposites.com](http://idicomposites.com)



# Sponsors



## Reinforcing Your Ideas



- MULTIAXIALS IN GLASS, CARBON & ARAMID
- CLOSED MOLD REINFORCEMENTS
- SELF-ADHESIVE FABRICS
- CORE MATERIALS
- CUTTING & KITTING
- FIRE PROTECTION
- BUILD-TO-PRINT SERVICE

[www.saertex.com](http://www.saertex.com)



The Consortium for Manufacturing Innovation in Structural Thermoplastics (CMIST) formed through a partnership between NIST and the University of Maine with leading industrial collaborators.

## Advancing Structural Thermoplastic Composites Manufacturing in the U.S.

Learn more or join at: [composites.umaine.edu](http://composites.umaine.edu)

Low-Cost | Rapid Expansion | Sustainable Pricing

## Carbon Fiber for Automotive



## Improve Adhesion

ADHESIVES | COATINGS | PAINTS



**BOOTH  
127**

## Plasma & Flame Surface Treaters

INNOVATIVE SOLUTIONS FOR THE AUTOMOTIVE INDUSTRY  
Enercon Industries | 262.255.6070 | [www.enerconind.com/automotive](http://www.enerconind.com/automotive)



# Sponsors

**Compleat<sup>®</sup>**  
COMPOSITE PELLETS

- Made To Order Performance
- Any resin - PP to PEEK
- All Fibers - Glass, Carbon, Hybrids

**PlastiComp<sup>®</sup>**  
Global Source For Long Fiber Technology  
[www.plasticomp.com](http://www.plasticomp.com)

**MITSUBISHI RAYON**  
CARBON FIBER & COMPOSITES

MANUFACTURER OF PREPREG  
TOWPREG AND ADHESIVE PRODUCTS

INDUSTRIAL | AUTOMOTIVE  
MEDICAL | AVIATION | MILITARY  
SPORTING GOODS | MARINE

[www.mrcfac.com](http://www.mrcfac.com)

**MITSUBISHI RAYON CO., LTD.**

**CREATIVE FOAM**  
COMPOSITE SYSTEMS

- 2 Manufacturing Locations to Serve You
  - Fenton, Michigan & Berthoud, Colorado
- In House Machine Building
- Dedicated Core Kit Engineering
- CAD/CAM – Catia V5 and AutoCad
- Material Neutral
- State of the Art CNC Manufacturing
- Providing a HI-Tech Core Kit Solutions
- Certified: ISO9001/2008, ISO 14001, ISO/TS 16949

**GL B E**

**RapidClave<sup>®</sup> 2**  
Next Generation RapidClave<sup>®</sup>  
Technology for Thermoset Prepregs –  
Aerospace, Automotive, and Industrial

RapidClave<sup>®</sup> Technology by  
**LIGHTWEIGHT LABS**

**RapidClave<sup>®</sup> Technology**

- High Pressure Rapid Curing Systems for Out-of-Autoclave Composites Manufacturing (Patents Pending)
- 5-17 minute part-to-part cycle time with thermoset epoxy prepreg
- 0-350 psi (0-24 bar) pressure: fast ramp times
- 110°F-600°F (43°C-316°C) direct tool heating
- Integrated, controlled rapid heating, cooling, vacuum
- 1-minute automatic tool change
- NEW top and bottom heating and cooling up to 900°F (482°C)

**Industrial Advantages**

- Reduced process time, scrap
- Reduced tooling needs
- Fully controlled, flexible processing
- Enables single piece flow process automation
- Lower energy costs, reduced factory floor footprint
- Right-sized process envelope for tool family size

Visit us at booth #109  
[www.globemachine.com](http://www.globemachine.com)

Globe Machine Manufacturing Company  
Tacoma, Washington, USA  
253-383-2584



# Celstran® Thermoplastic Composites

The Material for Great Inventions™

## If You Think Lighter Can't be Stronger, Some of the World's Leading Designers Would Disagree

Great imaginations can turn ideas into wondrous inventions, as long as you have the right material. Lightweight. Strong. Stiff. Tough. Celstran continuous fiber reinforced thermoplastic composites (CFR-TP tapes and CFR-TPR rods and profiles) can help you push the envelope on your designs.

## Strength-to-Weight Properties You've Only Dreamed of... Until Now

From ground vehicles, oil and gas, aerospace – and everything in between – Celstran continuous fiber reinforced composites open new design space, enabling large-scale lightweighting for demanding component requirements.

## Tailored to Your Vision

With the broadest portfolio of thermoplastic composites in the industry, Celstran tapes, rods and profiles can deliver precise performance to meet your specific design needs and deliver:

- Low weight with high strength and stiffness
- Superior dimensional and thermal properties
- Excellent chemical and corrosion resistance
- Eco-friendly processing and recyclability

## Great Inventions Don't Happen Alone

Because many great ideas are a collaborative effort, Celanese brings unmatched technical expertise and design and application development support to help create groundbreaking solutions.

*Imagine what's possible and make it real with Celstran continuous fiber reinforced thermoplastic composites.*



Celanese, 8040 Dixie Highway, Florence, KY, USA 41042

© 2014 Celanese or its affiliates. All rights reserved.

Celanese® registered C-ball design and all other trademarks identified herein with ©, TM, SM, unless otherwise noted, are trademarks of Celanese or its affiliates.





# Salute to our Sponsors

The SPE Automotive Composites Conference would not exist without the gracious support of our sponsors, who underwrite the cost of facilities and equipment rentals, food and beverages, producing and printing our program guide and conference proceedings, and many other items, large and small. Hence, it is with great appreciation that we thank and acknowledge the contributions of the 2015 Automotive Composites Conference & Exhibition sponsors, exhibitors, and other patrons for making this show a success.

## Premier Sponsors

- Celanese Corp. \*◆◆▲
- Hexion Inc. \*+
- Michigan Economic Development Corp. \*◆+■
- BYK USA, Inc. +
- Altair Engineering, Inc. \*
- Asahi Kasei Plastics North America, Inc. \*
- Ashland Inc. \*
- BASF \*
- Composites One LLC \*
- Core Molding Technologies, Inc. \*
- CPI (Division of Core Molding Technologies) \*
- Cytec Industries Inc. \*
- DIEFFENBACHER GmbH Maschinen- und Anlagenbau \*
- Dow Automotive Systems \*
- Evonik Industries AG \*
- Fraunhofer Project Centre @ Western Huntsman \*
- JHM Technologies, Inc. \*
- Owens Corning \*
- PPG Industries \*
- Red Spot Paint & Varnish Company, Inc. \*
- Toray Composites (America), Inc. (TCA) \*
- Faurecia Automotive Exteriors \*

## Media / Association Sponsors

- Automotive Design & Production magazine
- Automotive Engineering International magazine
- China Plastic & Rubber Journal
- China Plastic & Rubber Journal International
- Composites World
- Information Forecast, Inc.
- Modern Plastics India Magazine
- PLASPEC Global Plastics Selector
- Plastics Engineering magazine
- Plastics Technology magazine
- Plastics: The Global Application Medium
- Rubber Fibres Plastics International magazine
- SAE International
- TheMoldingBlog.com
- WardsAuto.com

## Associate Sponsors / Exhibitors

- A&P Technology \*
- Abaris Training Resources, Inc. \*
- ACMOS Inc. \*
- Addcomp North America, Inc. \*
- Advanced Structures and Composites Center - University of Maine \*
- AOC Resins \*
- Arkema Inc. \*
- A. Schulman, Inc. \*
- Automated Dynamics \*
- Cannon USA \*
- CHOMARAT \*
- Consortium for Manufacturing Innovation in Structural Thermoplastics (CMIST) - University of Maine \*
- Coriolis Composites SAS \*
- Creative Foam Corp. \*
- Dolphitech AS \*
- Enercon Industries Corp. \*
- Engel North America \*
- ESI Group \*
- e-Xstream engineering \*
- Fibrtec Inc. \*
- Fisher/Unitech, Inc. \*
- FRIMO Group GmbH \*
- Globe Machine Manufacturing Co. \*
- Great Lakes Composites Institute \*
- Gurit (USA) Inc. \*
- Henkel Corp. \*
- Hennecke, Inc. \*
- IDI Composites® International \*
- Innovium, LLC \*
- KraussMaffei \*
- KRÜSS USA \*
- LANXESS Corp. \*
- LayStitch™ Technologies LLC \*
- Lydall Performance Materials \*
- Mafic SA \*
- Magna Exteriors \*
- Mitsubishi Rayon Carbon Fiber & Composites \*
- Mitsui Chemicals America, Inc. \*
- Molding Products LLC \*
- National Research Council Canada (NRC-CNRC) \*
- NETZSCH Instruments North America, LLC \*
- North American Composites (NAC) \*
- Plasmatreat \*
- Plasticomp, Inc. \*
- Polystrand \*
- RCO Engineering, Inc. \*
- SAERTEX USA, LLC \*
- Siemens PLM Software \*
- Siempelkamp Maschinen- und Anlagenbau GmbH & Co. KG \*
- Sigmatex Carbon Composite Solutions \*
- Spectrus Informatics Pvt. Ltd. \*
- Strothmann Machines & Handling GmbH \*
- TenCate Advanced Composites USA, Inc. \*
- Toho Tenax America, Inc. \*
- Trexel, Inc. \*
- Weber Manufacturing Technologies Inc. \*
- Williams, White & Co. \*
- Youtec Co., Ltd. \*
- Zoltek: A Toray Group Company \*

## Breakfast / Coffee Break / Lunch Sponsors Advertising Only Sponsors

- SABIC ■
- SAMPE (Society for the Advancement of Material and Process Engineering) ■
- Graco, Inc. - Applied Fluid Dispensing Division ■
- Johns Manville ■
- Plasan Carbon Composites ■
- WesTool Corp. ■
- American Chemistry Council - Plastics Division ●
- DSC Consumables, Inc. ●
- Shear Comfort Ltd. ●
- Dassault Systèmes ◆